



PRICE PUMP®

TYPE CDMD

PUMP VOLUTE / IMPELLER MATERIALS

- CD100MDSS – 316 STAINLESS STEEL
- CD150MDSS – 316 STAINLESS STEEL

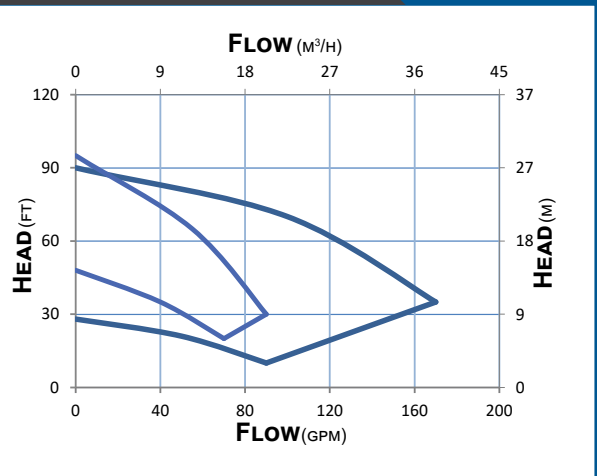
APPLICATIONS

- TOXIC OR EXPLOSIVE FLUIDS
- AGGRESSIVE CHEMICALS
- BIODIESEL PRODUCTION
- WATER TREATMENT
- GALVANIC PROCESSES, SURFACE TREATMENTS
- SCRUBBER APPLICATIONS
- PHARMACEUTICAL INDUSTRY
- VAPOR DEGREASERS



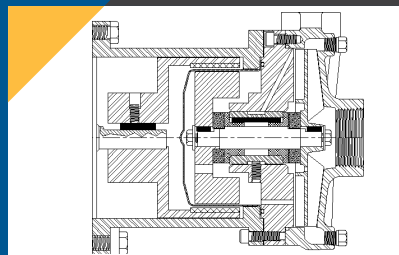
STANDARD SPECIFICATIONS

- CD100MD Discharge 1" FNPT, Suction 1-1/4" FNPT
- CD150MD Discharge 1-1/2" FNPT, Suction 2" FNPT
- MAXIMUM IMPELLER DIAMETER: 4.94"
- IMPELLER MATERIAL: 316SS
- MOTOR: NEMA C FACE
- O-RINGS: VITON
- BUSHINGS: CARBON GRAPHITE
- THRUST WASHERS: CERAMIC
- DRIVE MAGNETS: SAMARIUM COBALT



FEATURES

- LEAK-PROOF, MAGNETIC DRIVE
- ELIMINATES SEALS TO REDUCE FRICTION WEAR
- HIGH TEMPERATURE CAPACITY
- THREADED PUMP CONNECTIONS



2203 SMEED PARKWAY CALDWELL, ID 83605

MAIN (208) 402-6871

TOLL FREE (800) 345-7867

EMAIL SALES@PRICEPUMP.COM

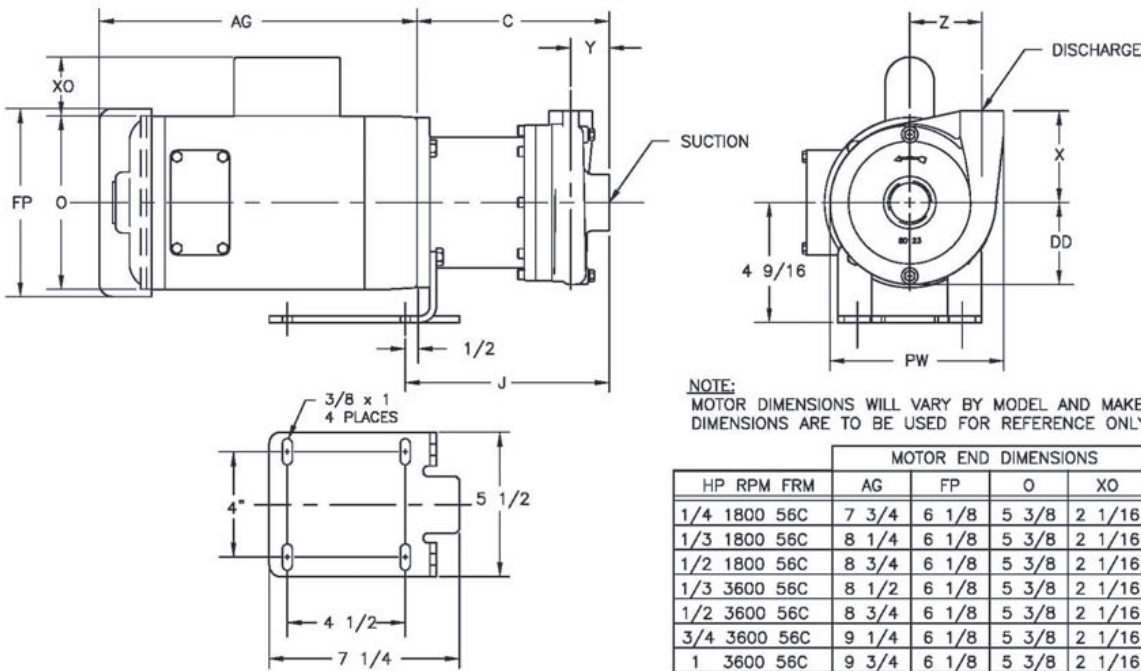
PRICEPUMP.COM





PRICE PUMP

TYPE CDMD



NOTE:
MOTOR DIMENSIONS WILL VARY BY MODEL AND MAKE,
DIMENSIONS ARE TO BE USED FOR REFERENCE ONLY.

| MOTOR END DIMENSIONS | | | | | | |
|----------------------|------|-----|--------|--------|-------|--------|
| HP | RPM | FRM | AG | FP | O | XO |
| 1/4 | 1800 | 56C | 7 3/4 | 6 1/8 | 5 3/8 | 2 1/16 |
| 1/3 | 1800 | 56C | 8 1/4 | 6 1/8 | 5 3/8 | 2 1/16 |
| 1/2 | 1800 | 56C | 8 3/4 | 6 1/8 | 5 3/8 | 2 1/16 |
| 1/3 | 3600 | 56C | 8 1/2 | 6 1/8 | 5 3/8 | 2 1/16 |
| 1/2 | 3600 | 56C | 8 3/4 | 6 1/8 | 5 3/8 | 2 1/16 |
| 3/4 | 3600 | 56C | 9 1/4 | 6 1/8 | 5 3/8 | 2 1/16 |
| 1 | 3600 | 56C | 9 3/4 | 6 1/8 | 5 3/8 | 2 1/16 |
| 1 1/2 | 3600 | 56C | 10 1/2 | 7 3/16 | 6 7/8 | 2 1/4 |
| 2 | 3600 | 56C | 11 1/8 | 7 3/16 | 6 7/8 | 2 1/4 |
| 3 | 3600 | 56C | 12 3/8 | 7 3/16 | 6 7/8 | 2 1/4 |

NOTE:
ALL DIMENSIONS HAVE BEEN ROUNDED TO THE NEAREST 1/16".

| | PUMP END DIMENSIONS | | | | | | | | |
|--------------|---------------------|--------|---------|---------|-------|-------|-------|---------|--------|
| | C | DD | PW | X | Y | Z | J | SUCTION | DISCHG |
| CD100 SS MAG | 7 5/8 | 3 1/8 | 6 5/8 | 3 1/2 | 1 3/8 | 2 3/4 | 8 1/8 | 1 1/4" | 1" |
| CD150 SS MAG | 8 5/8 | 4 1/16 | 7 15/16 | 3 13/16 | 2 1/8 | 3 1/8 | 9 1/8 | 2" | 1 1/2" |

DIMENSIONS

STAINLESS STEEL MODEL SHOWN

| TECHNICAL INFORMATION | |
|-----------------------|--------------------|
| MAX FLOW (CD100MD) | 90 GPM (20 M3/HR) |
| MAX FLOW (CD150MD) | 190 GPM (43 M3/HR) |
| MAX HEAD | 100 FEET (30.5M) |
| MIN. FLOW (CD100MD) | 12 GPM (2.7 M3/HR) |
| MIN. FLOW (CD150MD) | 25 GPM (5.7 M3/HR) |
| MAX WORKING PRESSURE | 300 PSI (21 BAR) |
| MAX TEMP. | 350°F (177°C)* |

| MATERIALS OF CONSTRUCTION | |
|---------------------------|--|
| CDMD | SS |
| VOLUTE | 316 STAINLESS STEEL |
| IMPELLER | 316 STAINLESS STEEL |
| BRACKET | 316 STAINLESS STEEL |
| FASTENERS | 316 STAINLESS STEEL |
| O-RING | VITON (STD), TEFLON, BUNA, EPR, NEOPRENE, KALREZ, FLUORO-SILICON |
| SHAFT | 316 STAINLESS STEEL (STD), TUNGSTEN CARBIDE COATED |
| BUSHINGS | CARBON (STD), SILICON CARBIDE |
| THRUST WASHERS | CERAMIC (STD), SILICON CARBIDE |
| MAGNET CUP | 316 STAINLESS STEEL |
| MAGNETS | SAMARIUM COBALT |



2203 SMEED PARKWAY CALDWELL, ID 83605

MAIN
(208) 402-6871

TOLL FREE
(800) 345-7867

EMAIL
SALES@PRICEPUMP.COM

PRICEPUMP.COM

