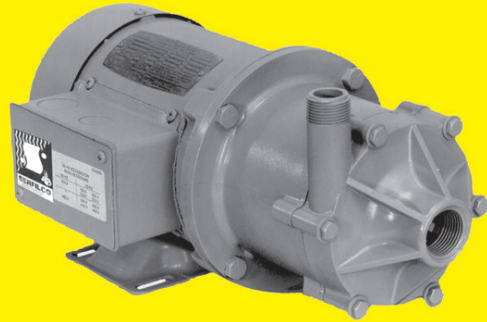
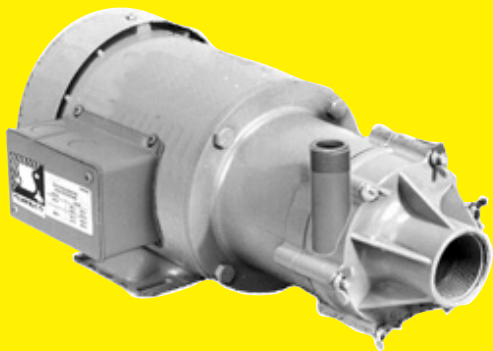




## SERIES 'D' | MAGNETIC-COUPLED PUMPS



MODEL 1 x 3/4



MODEL 1 1/2 x 1

### SEAL-LESS AND "LEAK-PROOF" FOR TOTAL SOLUTION CONTAINMENT

*Reliable, trouble-free pumping for:*

### WASTE TREATMENT / FUME SCRUBBING CHEMICALS / PHOTOGRAPHIC ACIDS / PLATING

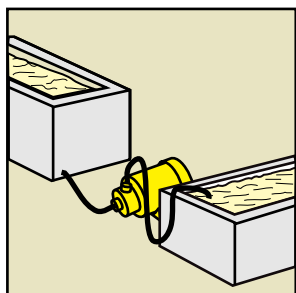
- **Flows to 53 U.S. GPM or 58 FT. TDH @ 60 Hz**  
(167 LPM or 12m @ 50 Hz)
- **Non-metallic solution contact**  
Polypropylene and Ryton  
PVDF  
316 stainless steel  
(See chemical Resistance Chart)
- **Centrifugal** – quiet, vibration-free
- **Rugged construction**  
Designed for continuous duty  
Horizontal or vertical discharge
- **Severe duty motor**  
All motors carry 1.15 service factor at 50 and 60 Hz  
Single phase motors have automatic thermal overload protection

**SERIES 'D' Magnetic Coupled Pumps** are seal-less, providing for maintenance-free and "leak-proof" operation. The magnetic coupling acts as a clutch to provide overload protection. The broad range of construction materials allows for a variety of applications and service with most corrosive solutions.

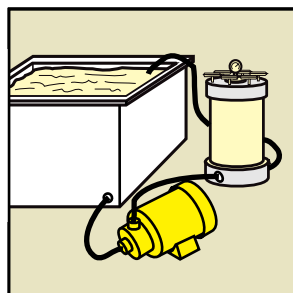
The impeller magnet assembly floats in the radial magnetic field set up by the motor driven external drive magnet. The impeller is designed to deliver the maximum flow

and pressure utilizing the available strength of the synchronized magnets.

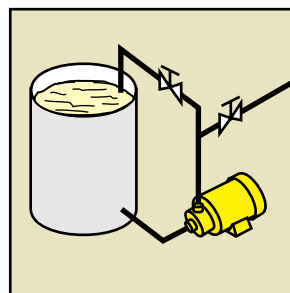
The standard diameter impeller is suitable for water-like liquids to 1.1 specific gravity. Liquids having a higher specific gravity can be pumped if the overall diameter of the impeller is reduced, the outlet flow is restricted, or the restrictions from a filter or other head loss is sufficient to keep the impeller magnet in synchronization.



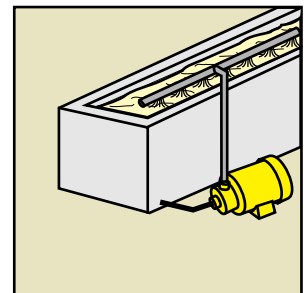
WASTE TREATMENT



FILTRATION



MIXING and  
TRANSFER PUMPING



RECIRCULATION

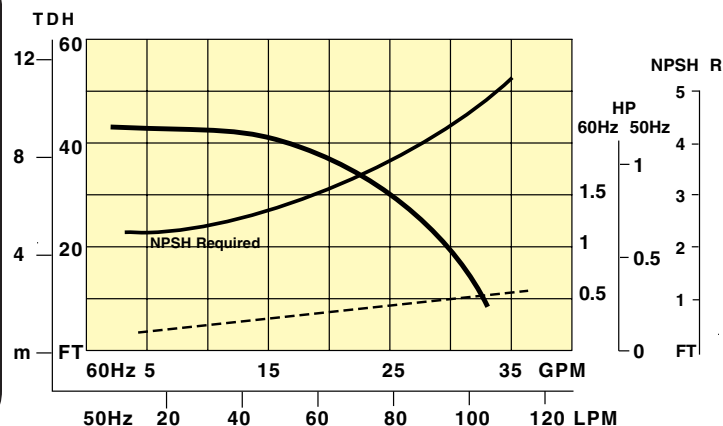
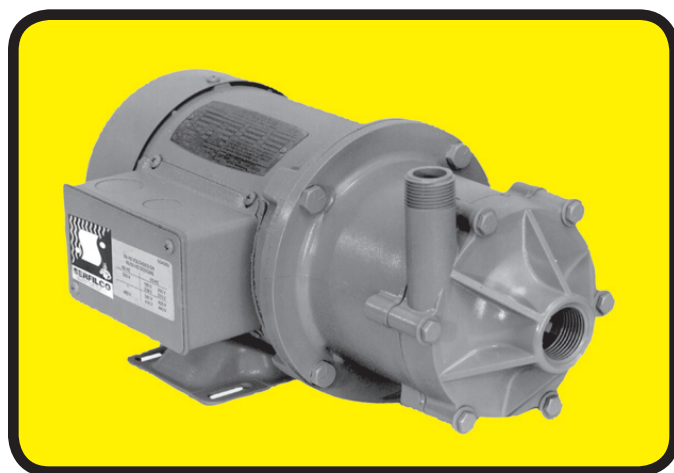
## SERIES 'D' PUMP Specifications

Pump materials of construction are as specified, all of which include a fluoride resistant ceramic spindle and thrust washer. Casing 'O' ring is Viton® and external fasteners are stainless steel. Standard impeller is designed to pump solutions having a specific gravity up to 1.1. (See flow curves.) For solutions having a higher specific gravity, up to 1.8 maximum, a trimmed impeller is required. Flow rate and TDH will be proportionately reduced. Refer to impeller trim chart, specify impeller

diameter and add Price Code No. 48-0200.

Motors are chemical service rated continuous duty, TEFC or explosion proof, painted two-part epoxy gray paint. An eight foot (2.4m) three-wire cord and plug are supplied on all TEFC single phase motors. Three phase and explosion-proof motors are supplied without cord or plug.

### SERIES 'D' 1 X 3/4 - CAPACITIES TO 33 U. S. GPM OR 43 FT. TDH @ 60 HZ (104 LPM OR 9.1M @ 50 HZ)

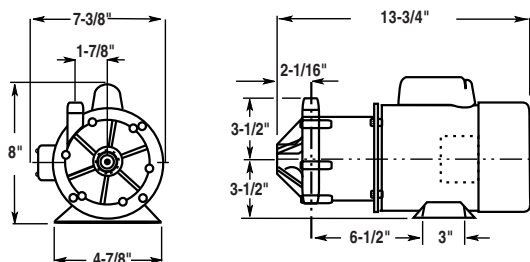


MODEL	SUCTION CASING	IMPELLER BUSHING <sup>3</sup>	LINER	MAX.	TEMP	INLET PRESSURE
					°F (°C)	PSI (BAR)
MRGR <sup>1</sup>	Ryton	Polypro	Ryton	Ryton	150 (65)	50 (3.5)
MKGC <sup>2</sup>	PVDF	PVDF	Carbon	PVDF	220 (104)	

PORT SIZES - 1" F x 3/4" M (NPT)

<sup>1</sup> Glass filled casing, liner, and impeller  
<sup>2</sup> Carbon fiber filled PVDF

<sup>3</sup> Ryton bushings are a blend of Ryton, PTFE, and carbon



#### IMPELLER TRIM CHART

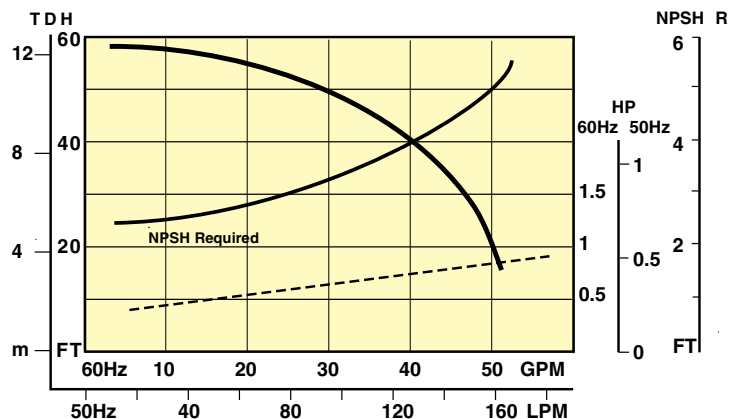
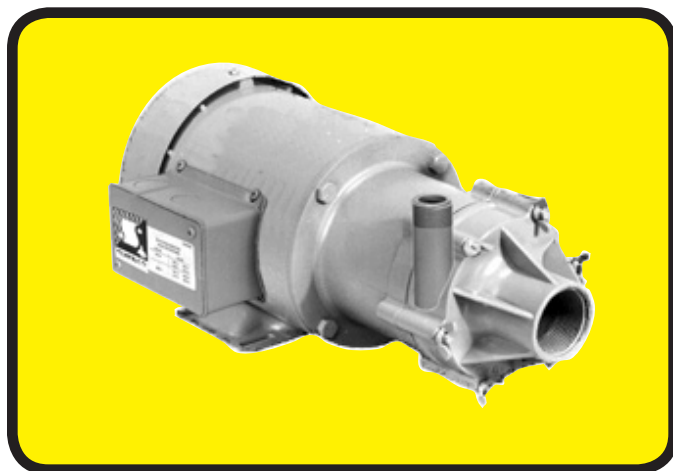
SPECIFIC GRAVITY	1.0 to 1.1	1.1 to 1.3	1.3 to 1.5	1.5 to 1.7	1.7 to 1.9	1.9 to 2.0
IMPELLER DIAMETER 60 Hz	3-1/2 std.	3-1/4	3-1/8	3.0	2-7/8	2-3/4
50 Hz	88.9 mm (3-1/2 in) std.				82.5mm (3-1/4 in.)	

#### TO ORDER, use Price Code Number

MODEL NUMBER	w/TEFC MOTOR			w/EXP. MOTOR			MOTOR VOLTAGE
	ADD TO MOD. NO.	PRICE CODE NO.	SHIPPING WEIGHT	ADD TO MOD. NO.	PRICE CODE NO.	SHIPPING WEIGHT	
1 x 3/4 MRGR 1 x 3/4 MKGC	-C.5	44-4101 44-4105	30 (14)	-E.75	44-4301A <sup>4</sup> 44-4302A <sup>4</sup>	37 (17)	115/190-230/1/50-60
1 x 3/4 MRGR 1 x 3/4 MKGC	-D.5	44-4101C 44-4105C	27 (12)	-F.75	44-4301C 44-4302C	34 (15)	190-230/380-415-460/3/50-60

<sup>4</sup> 60 Hz only

## SERIES 'D' 1-1/2 X 1 - CAPACITIES TO 53 U. S. GPM OR 58 FT.TDH @ 60 HZ (167 LPM OR 12M @ 50 HZ)

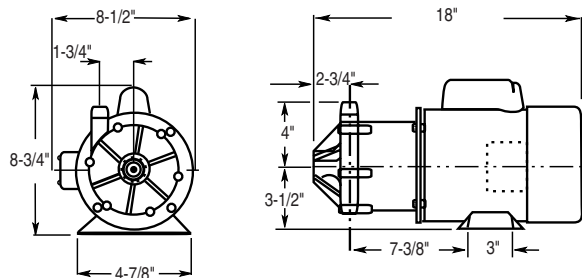


### CONSTRUCTION MATERIALS

MODEL	SUCTION CASING	IMPELLER	BUSHING <sup>3</sup>	LINER	MAX. TEMP	MAX. INLET PRESSURE
					°F (°C)	PSI (BAR)
MPGR <sup>1</sup>	Polypro	Polypro	Ryton	Ryton	150 (65)	50 (3.5)
MSGR	316 SS	316 SS	Ryton	316 SS	250 (121)	200 (13.8)
MKGC <sup>2</sup>	PVDF	PVDF	CARBON	PVDF	220 (104)	75 (5.2)

<sup>1</sup> Glass filled casing, impeller and liner      <sup>3</sup> Ryton bushings are a blend of Ryton, PTFE, and carbon  
<sup>2</sup> Carbon fiber filled PVDF

PORT SIZES - 1-1/2" F x 1" M (NPT)



### IMPELLER TRIM CHART

SPECIFIC GRAVITY	1.0 to 1.1	1.1 to 1.3	1.3 to 1.5	1.5 to 1.7	1.7 to 1.9	1.9 to 2.0
					°F (°C)	PSI (BAR)
IMPELLER DIAMETER 60 Hz	3-3/4 std	3-5/8	3-1/2	3-3/8	3-1/4	3-1/8
50 Hz	95.2mm (3-3/4 in) std.				88.9 mm (3-1/2 in.)	

**TO ORDER, use Price Code Number**

MODEL NUMBER	w/TEFC MOTOR			w/EXP. MOTOR			CLASS I GROUP D CLASS II GROUP F & G	MOTOR VOLTAGE
	ADD TO MOD. NO.	PRICE CODE NO.	SHIPPING WEIGHT	ADD TO MOD. NO.	PRICE CODE NO.	SHIPPING WEIGHT		
	(HP)		Lbs (kg)	(HP)		Lbs (kg)		
1-1/2 x 1 MPGR		44-0581	42 (19)		44-0571A <sup>4</sup>	49 (22)	115/190-230/1/50-60	
1-1/2 x 1 MSGR	-C.75	44-0441	49 (22)	-E.75	44-0691A <sup>4</sup>	56 (25)		
1-1/2 x 1 MKGC		44-0585	42 (19)		44-4304A <sup>4</sup>	49 (22)		
1-1/2 x 1 MPGR		44-0581C	32 (15)		44-0571C	39 (18)	190-230/380-415-460/3/50-60	
1-1/2 x 1 MSGR	-D.75	44-0441C	39 (18)	-F.75	44-0691C	46 (21)		
1-1/2 x 1 MKGC		44-0585C	32 (15)		44-4304C	39 (18)		

<sup>4</sup> 60 Hz only

### OPTIONAL

	EXAMPLE	ADDDO PRICE CODE NO.
Chemic (PTFE & mica) bushing <sup>5</sup>	MPG <u>K</u>	- K
Carbon bushing	MPG <u>C</u>	- L
Stainless steel liner	MP <u>S</u> GR	- M
Stainless steel spindle & thrust washer	M <u>S</u> SR	- N

<sup>5</sup> This is a replacement for bushings formerly referred to as Chemloy



## Proudly Made in the USA, SERFILCO Offers the Widest Range of Chemical Pumps Anywhere.

### 'EH' Vertical Pump

- Can Run Dry
- Extended Column to 10'
- Flows to 185 gpm, 145 ft. TDH



### 'HE' Horizontal Pump

- Single or Double Mech. Seal
- Variety of Material Types
- Flows to 175 gpm, 140 ft. TDH



### 'ME' Magnetic Coupled Pump

- Seal-less Magnetic Coupled
- Polypropylene or PVDF
- Flows to 95 gpm, 54 ft. TDH



### 'EF' Vertical Pump

- Can Run Dry
- Suction Extension to 3'
- Flows to 400 gpm, 170 ft. TDH



### 'HF' Horizontal Pump

- Single or Double Mech. Seal
- Variety of Material Types
- Flows to 400 gpm, 160 ft. TDH



### 'FE' Magnetic Coupled Pump

- Seal-less Magnetic Coupled
- Polypropylene or PVDF
- Flows to 130 gpm, 97 ft. TDH



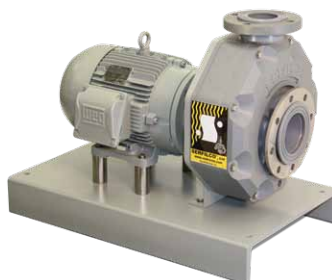
### 'EHM' Vertical Pump

- Can Run Dry
- Suction Extension to 3'
- Flows to 650 gpm, 115 ft. TDH



### 'HA' Horizontal Pump

- Single or Double Mech. Seal
- Machined from Solid CPVC
- Flows to 1200 gpm, 115 ft. TDH



### 'FES' Magnetic Coupled Pump

- Seal-less Magnetic Coupled
- Polypropylene or PVDF
- Flows to 250 gpm, 175 ft. TDH

