



SERIES 'G' BAG FILTER CHAMBERS

OPERATION AND
SERVICE GUIDE
O-0623A
APRIL, 2008

Refer to Bulletin C-308 and Parts Lists: P-5470

	MODELS	SIZE	PRICE CODE
CPVC	CL1235BFS-1-1/2-G3A	30"	78-1733-C
	CL1255BFS-1-1/2-G3A	50"	78-1735-C
PVC	PL1235BFS-1-1/2-G3A	30"	78-1733-P
	PL1255BFS-1-1/2-G3A	50"	78-1735-P
PP	PPL1235BFS-1-1/2-G3A	30"	78-1733-PP
	PPL1255BFS-1-1/2-G3A	50"	78-1735-PP

* Chambers manufactured after: 01 / 01 / 2005

SAFETY PRECAUTIONS



BEFORE USING CHAMBER

1. Read operating instructions and instructions supplied with chemicals to be used.
2. Refer to a chemical resistance data chart for compatibility of plastic material with solution to be used.
3. Note pressure limitations.
4. Operating personnel should always wear suitable protective clothing: face mask or goggles, apron and gloves.
5. All piping must be supported and aligned independently of chamber.
6. Always close valves slowly to avoid hydraulic shock.
7. Ensure that all fittings and connections and cover are tightened.

BEFORE CHANGING APPLICATION OR PERFORMING MAINTENANCE

1. Wear protective clothing as described in item 4 above.
2. Flush chamber thoroughly with a neutralizing solution.
3. Verify compatibility of materials as stated in item 2 above. (SAFETY PRECAUTIONS)



CAUTION

Chamber covers, shell base assemblies and o-ring elastomers are available in a variety of materials. Refer to unit Model No. and bulletin to identify material of construction for your model. **Verify compatibility of all components with solution, maximum operating temperature and pressure.** These units incorporate an o-ring seal at cover, base and vent valve. Verify solution compatibility with o-ring material. **DO NOT OVER-TIGHTEN COVER.** Cover should be sealed securely, not overtight to cause stress or failure of cover. If leakage occurs, open the unit and clean and inspect o-ring. A suitable lubricant applied to the o-ring will facilitate the seal. Replace if stretched or otherwise damaged.

INSTALLATION

Carefully note IN, OUT and DRAIN connections. Install in the proper direction of flow. Unit is shipped completely assembled and ready for installation. Filter bags are not included. Filter bags must be ordered separately (See Bulletin C-308 or Parts List P-5470).

Have replacement quantity in stock.

1. Filter chamber is free standing and stable when inlet and outlet piping is completed.
2. Inlet and discharge piping should be equal to port size. Smaller pipe size for low flow rates is acceptable when consideration for system pressure loss is included.
3. Install valve on inlet and outlet of chamber to facilitate filter bag replacement.
4. Drain connection can also be valved for convenience.

TO REPLACE FILTER BAGS

1. Stop pump. Close inlet and outlet valves, open drain and vent. Loosen tee handles at cover and lift cover off shell.
2. Remove hold-down nut, turn counter-clockwise.
3. Grasp the rim of the filter bag and lift straight up to remove from chamber. Set aside for cleaning or disposal.
4. Insert new or clean filter bags, making sure that bag slides down into perforated tube (Folding bag in half, down it's length, will ease installation.) and that bag rim is seated properly in counterbore. The top of the bag rim must be flush with the top of the plate. Replace hold-down nut.
5. Place o-ring into bottom of cover groove (see diagram). Replace molded cover on shell, aligning shell edge with gasket groove and spring with hold-down nut. Place FRP cover-plate on top of molded cover. Pull cover and FRP cover-plate down by tightening two diametrically opposite tee handles. Tighten remaining tee handles, keeping the cover as even as possible.
6. Close drain, open outlet valve and inlet valve. As the solution rises in the chamber, air will escape at the vent. Close vent valve when solution appears with out bubbles.

OPERATION

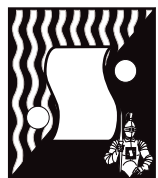
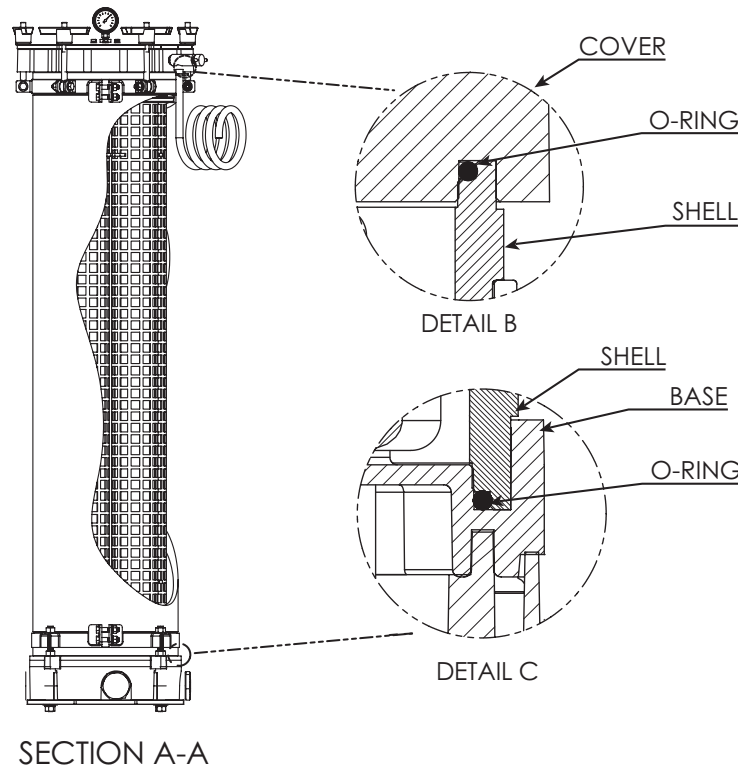
Open inlet valve to filter slowly, while checking for o-ring leaks. If leakage occurs refer to CAUTION section of operating instructions. Open vent valve slightly to bleed entrapped air. Close valve when liquid appears without bubbles. As the filter bag removes contaminants, the pressure drop across the unit will slowly rise. This is measured by the pressure gauge mounted on the chamber cover. In normal operation, it is desirable to change the filter bags when the pressure rises 15 pounds above the initial pressure.

! In no case should the pressure exceed what is listed on the pressure limitation chart, shown below. A rise in pressure will be reflected by a drop in flow if a centrifugal pump is being used. When the flow drops below an acceptable point, the filter bags should be changed.

PRESSURE / TEMPERATURE

MAXIMUM PRESSURE AT OPERATING TEMPERATURE WITH TOP & BOTTOM REINFORCING PLATES			
TEMPERATURE	PSI ¹		
	PL	PPL	CL
70°F	80	75	80
100°F	75	60	75
120°F	40	50	70
140°F	25	40	55
170°F	—	15	35
200°F	—	—	30

¹ Maximum differential pressure from inlet to outlet (across separator plate) is 40 PSI @ 70°F



SERFILCO[®], LTD.

2900 MacArthur Blvd.
Northbrook, IL 60062-2005 U.S.A.
e-mail: sales@serfilco.com FAX:

847-509-2900
800-323-5431
847-559-1141

www.serfilco.com