



PRICE PUMP®

HP75

PUMP VOLUTE / IMPELLER MATERIALS

- HP75 (BN) – BRONZE / CPVC
- HP75 (BS) – BRONZE / 316SS
- HP75 (CN) – CPVC / CPVC
- HP75 (CS) – CPVC / 316SS

APPLICATIONS

- CHILLERS / LIQUID COOLING
- CHEMICAL PROCESSING
- BOOSTER PUMPS
- WATER PURIFICATION
- CIRCULATION / FILTRATION
- AIR CONDITIONING / HEAT RECOVERY



GASKET DESIGN

STANDARD SPECIFICATIONS

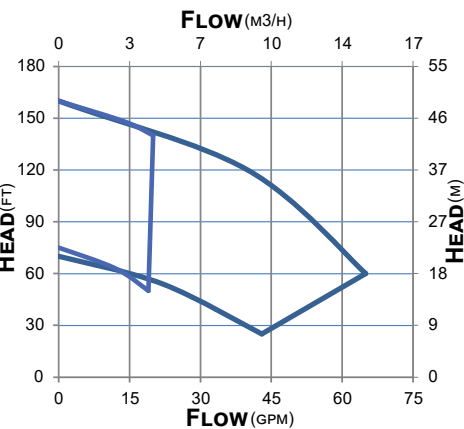
- DISCHARGE 3/4" FNPT, SUCTION 3/4" FNPT
- MAXIMUM IMPELLER DIAMETER: 6.00"
- MOTOR: NEMA 56J FOOTLESS (MULTIPLE ENCLOSURES AVAILABLE)
- PUMP ENERGY INDEX: .746-.892

MECHANICAL SEAL TYPES

- SINGLE, 5/8" TYPE 6 BUNA, CARBON VS. CERAMIC
- NOTE: ADDITIONAL SEAL OPTIONS AVAILABLE
- BRACKET MATERIAL: CAST IRON (BRONZE OPTIONAL)
- BELL GASKET MATERIAL: EPR (VITON OPTIONAL)

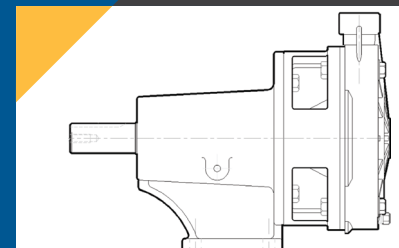
OPTIONAL CONFIGURATIONS

- POWER FRAME MOUNTING
- LONG-COUPLED MOUNTING



FEATURES

- END BELL GASKET DESIGN – ISOLATES
- CAST IRON MOTOR BRACKET FROM LIQUID FLOW
- CONFIGURATION – COMPACT, CLOSE COUPLED
- DESIGN
- MOTOR SHAFT – THREADED



2203 SMEED PARKWAY CALDWELL, ID 83605

MAIN (208) 402-6871

TOLL FREE (800) 345-7867

EMAIL SALES@PRICEPUMP.COM

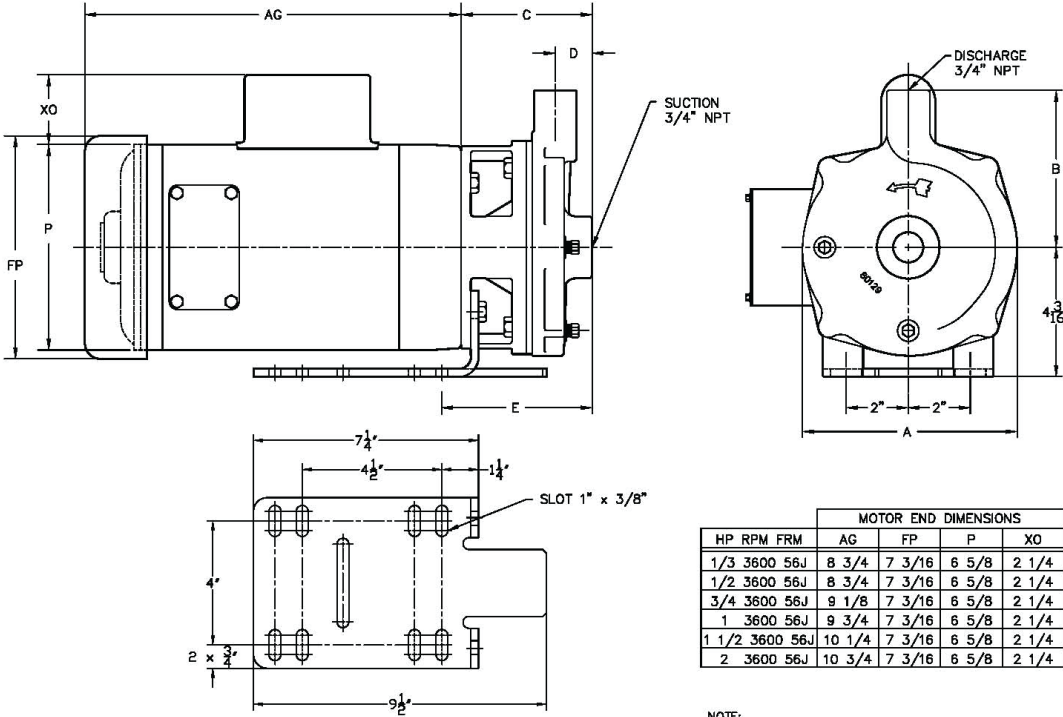
PRICEPUMP.COM





PRICE PUMP

HP75



| MOTOR END DIMENSIONS | | | | | | |
|----------------------|------|-----|--------|--------|-------|-------|
| HP | RPM | FRM | AG | FP | P | XO |
| 1/3 | 3600 | 56J | 8 3/4 | 7 3/16 | 6 5/8 | 2 1/4 |
| 1/2 | 3600 | 56J | 8 3/4 | 7 3/16 | 6 5/8 | 2 1/4 |
| 3/4 | 3600 | 56J | 9 1/8 | 7 3/16 | 6 5/8 | 2 1/4 |
| 1 | 3600 | 56J | 9 3/4 | 7 3/16 | 6 5/8 | 2 1/4 |
| 1 1/2 | 3600 | 56J | 10 1/4 | 7 3/16 | 6 5/8 | 2 1/4 |
| 2 | 3600 | 56J | 10 3/4 | 7 3/16 | 6 5/8 | 2 1/4 |

NOTE:
MOTOR DIMENSIONS WILL VARY BY MODEL AND MAKE.
DIMENSIONS ARE TO BE USED FOR REFERENCE ONLY.

| MATERIAL | MODEL | A | B | C | D | E |
|----------|----------------|---------|---------|-------|--------|-------|
| BRONZE | HP75BN/ HP75BS | 6 15/16 | 5 1/8 | 4 1/8 | 1 3/16 | 4 7/8 |
| KANIGEN | HP75KN/ HP75KS | 6 15/16 | 5 1/8 | 4 1/8 | 1 3/16 | 4 7/8 |
| CPVC | HP75CN/ HP75CS | 7 1/8 | 4 11/16 | 4 | 1 3/16 | 4 5/8 |

NOTE:
ALL DIMENSIONS ARE ROUNDED TO THE
NEAREST 1/16 INCH.

DIMENSIONS

MATERIALS OF CONSTRUCTION

| HP75 | BN | BS | KN ⁺ | KS ⁺ | CN | CS |
|------------------|-----------------------------|--------------------|-----------------|--------------------|------|-------|
| VOLUTE | BRONZE | BRONZE | CF | CF | CPVC | CPVC |
| IMPELLER | CPVC | 316SS | CF | CF | CPVC | 316SS |
| BRACKET | CAST IRON (BRONZE OPTIONAL) | | | | | |
| FASTENERS | STAINLESS STEEL | STEEL- ZINC PLATED | | STEEL- ZINC PLATED | | |
| GASKET | EPR (VITON OPTIONAL) | | | | | |

* KANIGEN IS AN ELECTROLESS NICKEL PLATING- CONTACT FACTORY FOR DETAILS

TECHNICAL INFORMATION

| | |
|----------------------------------|-----------------------------|
| MAX FLOW (CPVC IMPELLER) | 20 GPM (4.5 M3/HR) |
| MAX FLOW (316SS IMPELLER) | 55 GPM (12.5 M3/HR) |
| MAX HEAD | 165 FEET (50 M) |
| MIN. FLOW | 0.5 GPM (0.12 M3/HR) |
| MAX SOLID SIZE | 0.030" (0.76 MM) |
| MAX (TYPE 6 SEAL) | 75 PSI (5.2 BAR) |
| WORKING (TYPE 2106 SEAL) | 150 PSI (10.3 BAR) |
| PRESSURE (TYPE 21 SEAL) | 150 PSI (10.3 BAR) |
| MAX TEMP. (CN, BN, CS) | 160°F (71°C)* |
| MAX TEMP. (BS) | 300°F (149°C)* |

* TEMPERATURE LIMITS ARE BASED ON STANDARD SEAL AND GASKET MATERIALS, AND WILL VARY ACCORDING TO THE LIQUID BEING PUMPED.



2203 SMEED PARKWAY CALDWELL, ID 83605

MAIN
(208) 402-6871

TOLL FREE
(800) 345-7867

EMAIL
SALES@PRICEPUMP.COM

PRICEPUMP.COM

