



'L' BAG FILTER CHAMBER

Refer to Bulletin C-309 and
Parts List P-9710.

⚠ IMPORTANT

1. Refer to Bulletin for operating specifications and replacement bags for each style chamber.
2. Read operating instructions and instructions supplied with chemicals to be used.
3. Refer to Chemical Resistance Data Chart for compatibility of materials with solution to be used.

START-UP

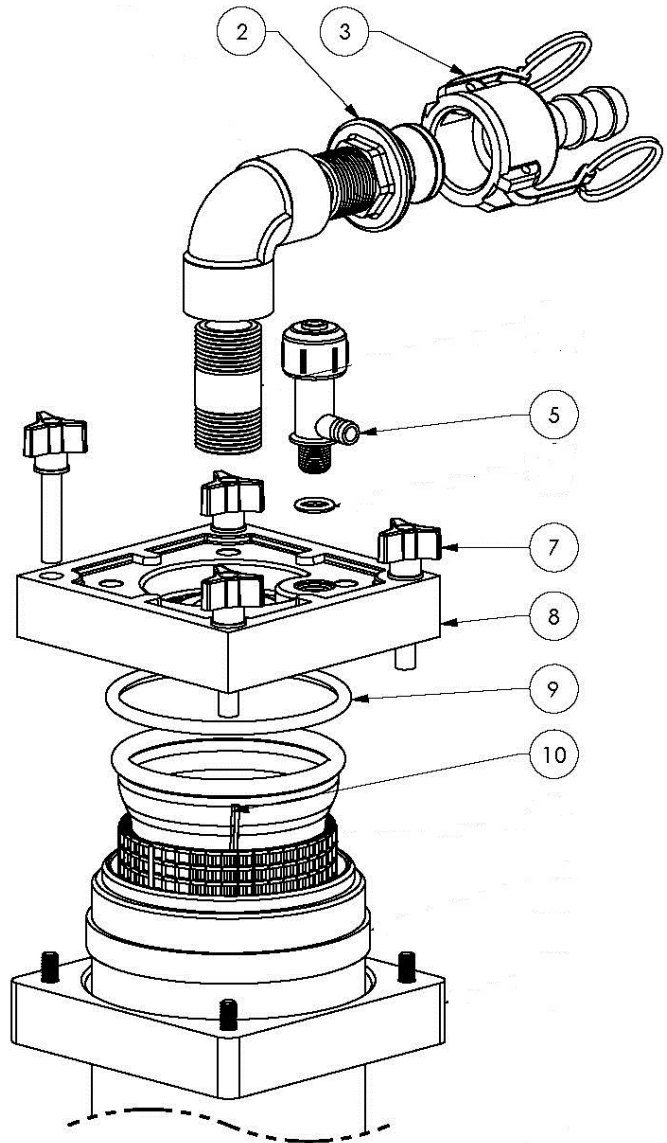
Attach hose adapter or pipe to base outlet which is 3/4" NPT. Connect inlet hose to cover. Tighten cover by turning plastic knobs.

BAG REMOVAL

1. Remove inlet hose by disconnecting quick coupler (3) at cover.
2. Loosen plastic knobs (7), and lift cover (8) off.
3. Liquid in bag can be drained by using a vinyl hose and priming ball as a syphon pump. Remove bag (10) by lifting straight up
4. Set bag aside for cleaning or disposal.

BAG REPLACEMENT

1. Insert bag into chamber and position cover onto chamber shell with cover "O"-ring (9) in position.
2. Lock cover on with plastic knobs.
3. Attach inlet hose with quick disconnect coupling.
4. Start pump and expel air from chamber by opening vent valve (5). Tighten when liquid starts coming from vent valve.



SERFILCO, LTD.

2900 MacArthur Blvd. 847-509-2900
Northbrook, IL 60062-2005 U.S.A. 800-323-5431
e-mail: sales@serfilco.com FAX: 847-559-1995
www.serfilco.com