



PRICE PUMP®

XJ400

PUMP VOLUTE / IMPELLER MATERIALS

XJ (SS) – 316SS / 316SS

APPLICATIONS

WASTE WATER TREATMENT
MUNICIPAL WATER TREATMENT
ACID MINE DRAINAGE
FRAC WATER TREATMENT
OILFIELD BRINE
CHEMICAL PROCESS
TRANSFER
IRRIGATION / DRAINAGE



STANDARD SPECIFICATIONS

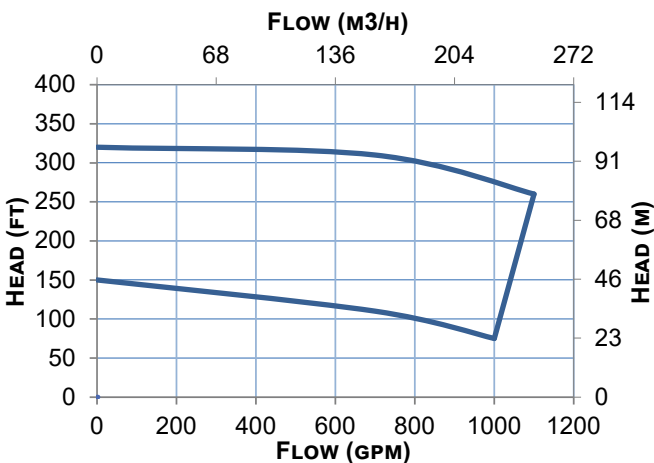
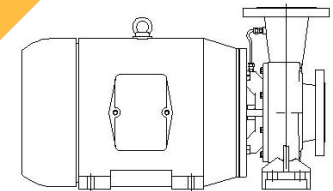
SUCTION - 4" FLANGE, DISCHARGE - 4" FLANGE
FLANGE SPECS. - 150 LB, ANSI, CENTERLINE
MAXIMUM IMPELLER DIAMETER: 8.5"
MOTOR: NEMA JM (MULTIPLE MOTOR ENCLOSURES AVAILABLE)
PUMP ENERGY INDEX: .990

MECHANICAL SEAL TYPES

SINGLE, 1-1/2" TYPE 21 VITON, CARBON vs. CERAMIC (SS)
NOTE: ADDITIONAL SEAL OPTIONS AVAILABLE
BRACKET MATERIAL: 316SS
SHAFT/SHAFT SLEEVE: 316SS
GASKET: SYNTHETIC FIBER

OPTIONAL CONFIGURATIONS

CLOSE-COUPLED MOUNTING



FEATURES

PUMP DESIGN – CLOSE COUPLED, COMPACT
STANDARD SEAL – TYPE 21
CONSTRUCTION – 316 STAINLESS STEEL
FLUSH OPTIONS – RECIRCULATION



2203 SMEED PARKWAY CALDWELL, ID 83605

MAIN
(208) 402-6871

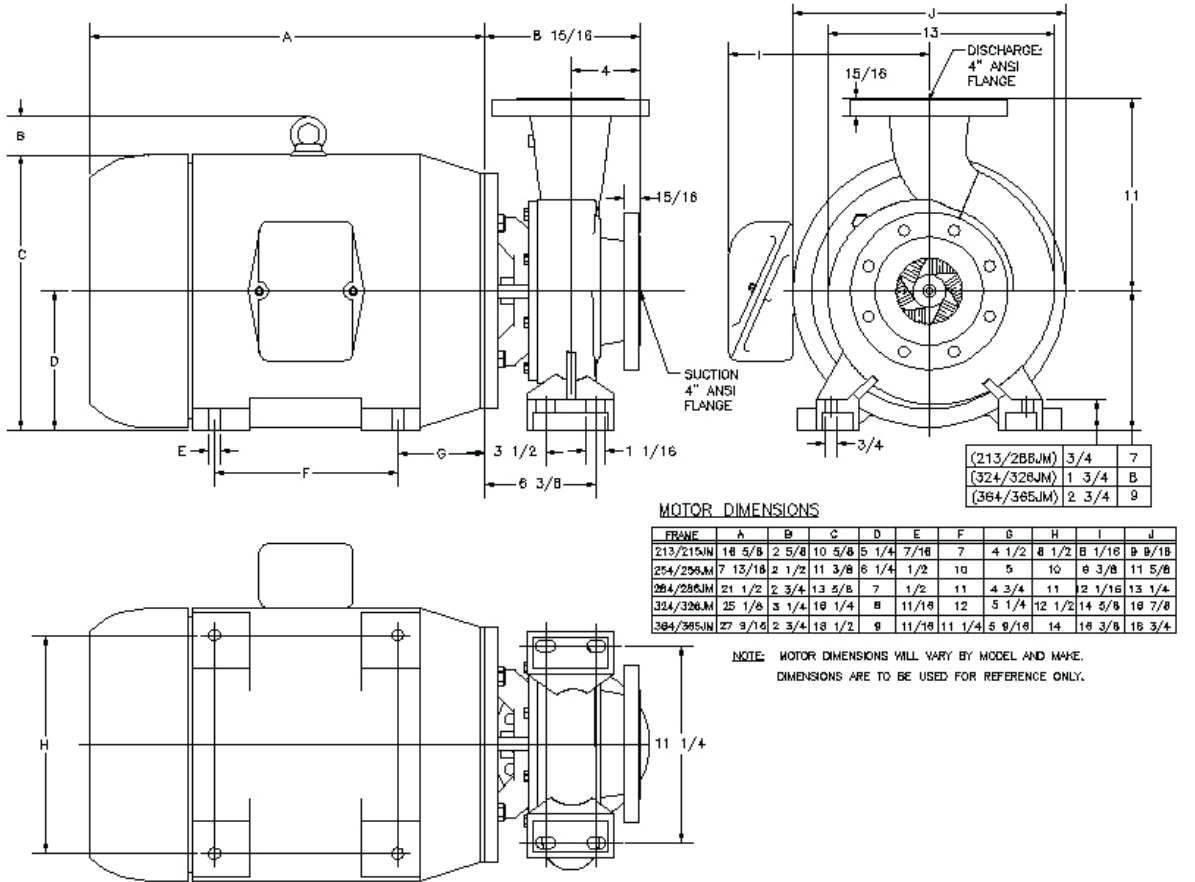
TOLL FREE
(800) 345-7867

EMAIL
SALES@PRICEPUMP.COM

PRICEPUMP.COM



XJ400



NOTES:
1. ALL DIMENSIONS ARE ROUNDED TO THE NEAREST 1/16 INCH.

DIMENSIONS

MATERIALS OF CONSTRUCTION	
XJ	SS
VOLUTE	316SS
IMPELLER	316SS
BRACKET	316SS
GASKET	SYNTHETIC FIBER
FASTENERS	316 SS

* TEMPERATURE AND PRESSURE LIMITS WILL VARY WITH LIQUID BEING PUMPED.

TECHNICAL INFORMATION	
MAX FLOW	1100 GPM (250 M3/HR)
MAX HEAD	320 FEET (98 M)
MIN. FLOW	100 GPM (22.7 M3/HR)
MAX SOLID SIZE	0.44" (11 MM)
MAX WORKING PRESSURE	(TYPE 21 SEAL) 150 PSI (10.3 BAR)* (TYPE 2 SEAL) 300 PSI (20.6 BAR)* (TYPE 9 SEAL) 350 PSI (24.1 BAR)
MAX TEMP.	350°F (176°C)*



2203 SMEED PARKWAY CALDWELL, ID 83605

MAIN
(208) 402-6871

TOLL FREE
(800) 345-7867

EMAIL
SALES@PRICEPUMP.COM

PRICEPUMP.COM

