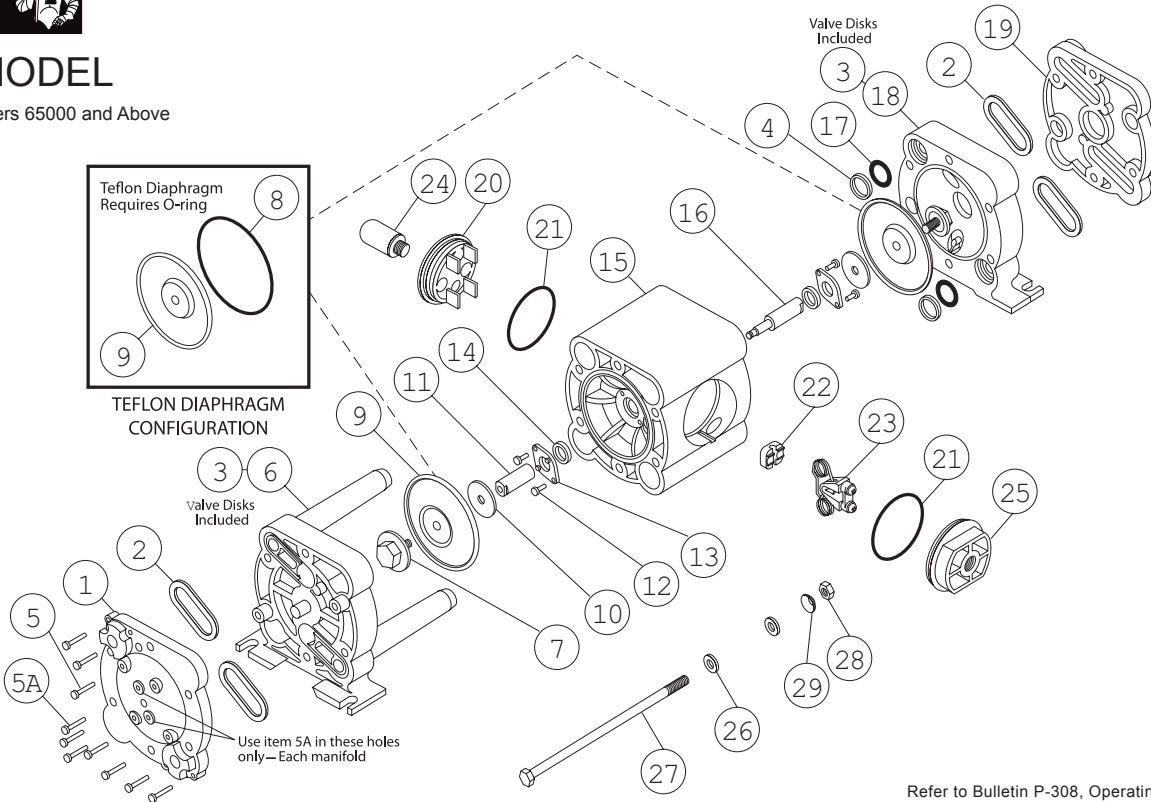


AIR DRIVEN DIAPHRAGM PUMPS

(1/4", 1/2", 1", 1 1/2" & 2")

1/4" MODEL

Non-Metallic
Serial Numbers 65000 and Above



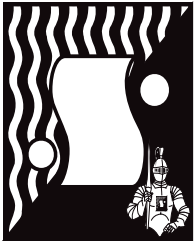
Refer to Bulletin P-308, Operating and Service Guide O-915

ITEM	DESCRIPTION	QTY PER PUMP	PART NO.	MATERIAL
1	LEFT MANIFOLD (Ports are NPT/BSP compatible)	1	71-0503 40 71-0503 42 71-0503 46 71-0503 56	POLYPRO NYLON COND-NYLON PVDF
2	MANIFOLD, GASKET	4	71-2111 11 71-2111 59 71-2111 24 71-1903 13	GEOLAST PTFE SANTO VITON
3	VALVE DISC (Included in item 6 & 18. Cannot be ordered separately.)	4	71-1006 59	PTFE
4	O-RING RETAINER	2	71-1928 17 71-2711 60	PTFE POLYPRO
5	SCREW (#8 X 1 1/4")	16	71-2524 26	S.S.
5A	SCREW (#8 X 1")	4	71-2525 26	S.S.
6	LEFT CHAMBER (Includes item 3)	1	71-0714 40 71-0714 42 71-0714 46 71-0714 56	POLYPRO NYLON COND-NYLON PVDF
7	OUTER DIAPHRAGM PLATE	2	71-1205 40 71-1205 42 71-1205 46 71-1205 56	POLYPRO NYLON COND-NYLON PVDF
8	O-RING, DIAPHRAGM (This o-ring used with PTFE diaphragms only !)	2	71-0606 23	SANTO
9	DIAPHRAGM	2	71-0604 19 71-0604 59 71-0604 23 71-0604 59	VITON GEOLAST PTFE SANTO PTFE
10	INNER DIAPHRAGM PLATE	2	71-1105 25	P.S.
11	DIAPHRAGM ROD (SHORT)	1	ASSY	S.S.
12	SCREW (#6 X 1/2")	4	71-2510 26	S.S.
13	SEAL RETAINER	2	71-2710 60	POLYPRO
14	LIP SEAL	2	71-2000 11	NITRILE
15	INTERMEDIATE	1	71-1508 60	POLYPRO
16	DIAPHRAGM ROD (LONG)	1	ASSY	S.S.
17	O-RING, MANIFOLD TUBE	2	71-1928 11 71-1928 17 71-1928 23 71-1928 13	NITRILE PTFE SANTO VITON

ITEM	DESCRIPTION	QTY PER PUMP	PART NO.	MATERIAL
18	RIGHT CHAMBER (Includes item 3)	1	71-0715 40 71-0715 42 71-0715 46 71-0715 56	POLYPRO NYLON COND-NYLON PVDF
19	RIGHT MANIFOLD	1	71-0513 40 71-0513 42 71-0513 46 71-0513 56	POLYPRO NYLON COND-NYLON PVDF
20	MUFFLER CAP	1	71-3108 60	POLYPRO
21	O-RING, CAPS	2	71-1909 11	NITRILE
22	SHUTTLE	1	71-0411 00	SPECIAL
23	SPRING CLIP ASSY	1	75-1000 00	VARIOUS
24	MUFFLER	1	71-3003	SPECIAL
25	AIR INLET CAP	1	71-3109 60	POLYPRO
26	FLAT WASHER	12	71-2300 26	S.S.
27	CAP SCREW	6	71-2517 26	S.S.
28	HEX NUT (1/4" - 20)	6	71-2600 26	S.S.
29	WASHER, TENSION	6	71-2305 26	S.S.
	DIAP. ROD ASSY	1	73-9000 00	S.S.

NOTES!

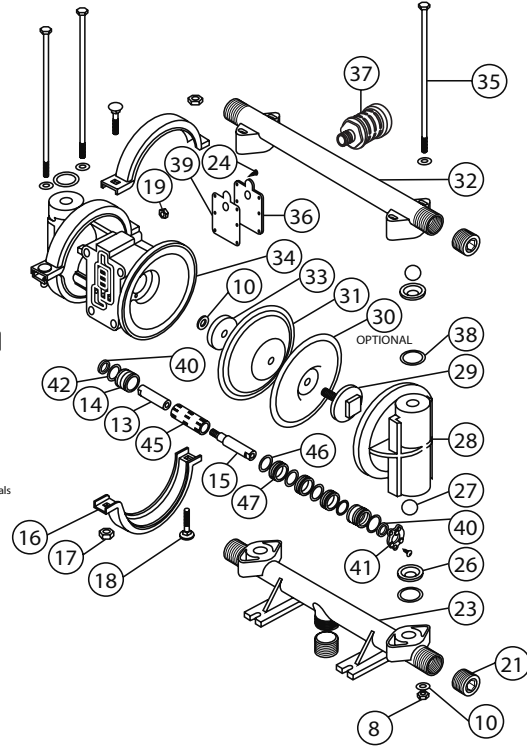
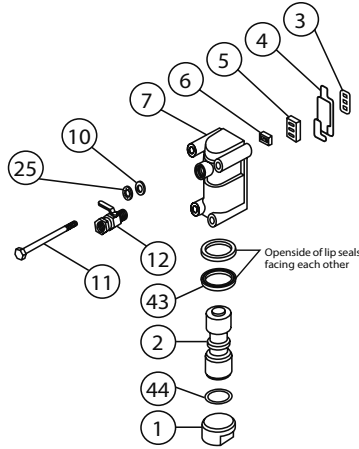
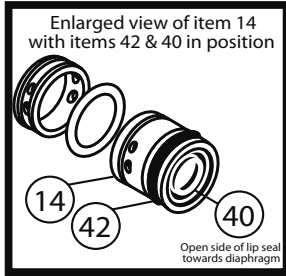
1 S.S. = STAINLESS STEEL; P.S. = PLATED STEEL; POLYPRO = POLYPROPYLENE



1/2" METALLIC

1/2" MODEL

Metallic
Serial Numbers 71000 and Above



ITEM	DESCRIPTION	QTY PER PUMP	PART NO.	MATERIAL
1	AIR VALVE END PLUG	1	71-1703 60 71-1703 43	POLYPRO NYLON
2	AIR VALVE SPOOL	1	71-0407 31	ACETAL
3	GASKET, INNER	1	71-2103 11	GEOLAST
4	GASKET, OUTER	1	71-2109 11	GEOLAST
5	VALVE PLATE	1	71-0403 00	S.S.
6	SHUTTLE	1	71-0409 00	SPECIAL
7	AIR VALVE BODY	1	71-0618 60 71-0618 43	POLYPRO NYLON
8	LOCK NUT (1/4" - 20)	4	71-2600 38	S.S.
10	FLAT WASHER	14	71-2300 26	S.S.
11	CAP SCREW (1/4" X 1/2")	4	71-2513 26	S.S.
12	AIR FLOW CONTROL VALVE	1	71-3400 30 71-3408 51	BRASS PVC
13	DIAPHRAGM ROD (SHORT)	1	ASSY	S.S.
14	END SPACER, PILOT SLEEVE	2	71-0204 40	POLYPRO
15	DIAPHRAGM ROD (LONG)	1	ASSY	S.S.
16	CLAMP SET (Complete with fasteners)	2	71-2900 26	S.S.
17	HEX NUT (5/16" - 18)	4	71-2601 26	S.S.
18	CARRIAGE BOLT (5/16" X 1 1/2)	4	71-2509 26	S.S.
19	HEX NUT (1/4" - 20)	4	71-2600 26	S.S.
21	MANIFOLD PLUG	3	71-2208 20 71-2208 26	AL S.S.
23	SUCTION MANIFOLD	1	71-0514 20 71-0514 26	AL 316 S.S.
24	SCREW (#6 X 1/2")	12	71-2510 26	S.S.
25	LOCK WASHER	4	71-2350 26	S.S.
26	VALVE SEAT	4	71-0900 40 71-0900 42 71-0900 26	POLYPRO NYLON 316 S.S.
27	BALL	4	71-1000 11 71-1000 45 71-1000 23 71-1000 13 71-1000 26	GEOLAST PTFE SANTO VITON S.S.
28	OUTER CHAMBER	2	71-0717 20 71-0717 26	AL 316 S.S.

ITEM	DESCRIPTION	QTY PER PUMP	PART NO.	MATERIAL
29	OUTER DIAPHRAGM PLATE	2	71-1208 20 71-1208 26	AL 316-S.S.
30	OVERLAY	2	71-1400 59	PTFE
31	DIAPHRAGM	2	71-0600 19 71-0600 23 71-0600 13	GEOLAST SANTO VITON
32	DISCHARGE MANIFOLD	1	71-0520 20 71-0520 26	AL 316 S.S.
33	INNER DIAPHRAGM PLATE	2	71-1100-40	POLYPRO
34	INTERMEDIATE	2	71-1516-60 71-1516-43	POLYPRO NYLON
35	CAP SCREW (1/4" X 7")	4	71-0506-26	S.S.
36	MUFFLER PLATE	1	71-3100-60 71-3100-43	POLYPRO
37	MUFFLER	1	71-3000-00	
38	O-RING, VALVE SEAT	4	71-1904-11 71-1904-17 71-1904-23 71-1904-13	NITRILE PTFE SANTO VITON
39	GASKET, MUFFLER PLATE	1	71-2105-10	FIBER
40	LIP SEAL, DIAPHRAGM ROD	2	71-2000-11	NITRILE
41	RETAINING PLATE	2	71-12708-40	POLYPRO
42	O-RING, END SPACER	2	71-1923-11	NITRILE
43	LIP SEAL, AIR VALVE	2	71-2003-11	NITRILE
44	O-RING, VALVE PLUG	1	71-1913-11	NITRILE
45	PILOT SLEEVE	1	71-0105-31	ACETAL
46	O-RING, PILOT SLEEVE	4	71-1920-16	URETHANE
47	INNER SPACER, PILOT SLEEVE	3	71-0203-40	POLYPRO

DIAPHRAGM ROD AVAILABLE ONLY AS AN ASSEMBLY

DIAPHRAGM ROD ASSEMBLY (Includes items 13 and 15)	1	73-3000	S.S.
--	---	---------	------

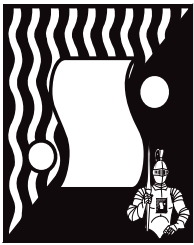
OPTIONAL ASSEMBLIES AVAILABLE

AIR VALVE ASSEMBLY (Includes items 1 thru 7 and 43,44)	1	74-0000-60 74-0000-43	POLYPRO NYLON
---	---	--------------------------	------------------

PILOT SLEEVE ASSEMBLY (Includes items 14, 40, 42, 45-47)	1	74-1000	VARIOUS
---	---	---------	---------

NOTES:

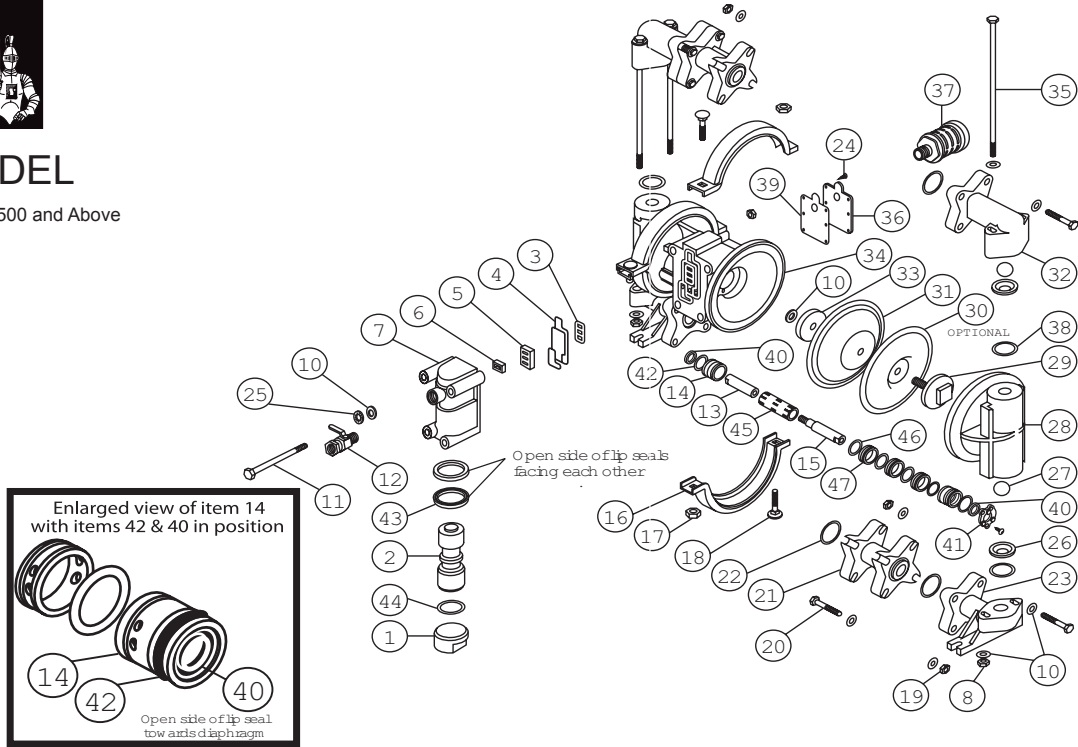
- 1 P.S. = PLATED STEEL; S.S. = STAINLESS STEEL; AL = ALUMINUM
- 2 MANIFOLD PORTS ARE NPT/BSP COMPATIBLE



1/2" PLASTIC

1/2" MODEL

Plastic
Serial Numbers 3500 and Above



ITEM	DESCRIPTION	QTY PER PUMP	PART NO.	MATERIAL
1	AIR VALVE PLUG	1	71-1703 60	POLYPRO
2	AIR VALVE SPOOL	1	71-0407 31	ACETAL
3	GASKET, INNER	1	71-2103 11	GEOLAST
4	GASKET, OUTER	1	71-2109 11	GEOLAST
5	VALVE PLATE	1	71-0403 77	CERAMIC
6	SHUTTLE	1	71-0409 00	SPECIAL
7	AIR VALVE BODY	1	71-1608 60	POLYPRO
8	LOCK NUT (1/4" - 20)	4	71-2600 38	S.S.
10	FLAT WASHER	46	71-2300 26	S.S.
11	CAP SCREW (1/4" X 4 1/2")	4	71-2513 26	S.S.
12	AIR FLOW CONTROL VALVE	1	71-3400 30	BRASS
13	DIAPHRAGM ROD (SHORT)	1	71-3408 51	PVC
14	END SPACER, PILOT SLEEVE	2	71-0204 40	POLYPRO
15	DIAPHRAGM ROD (LONG)	1	ASSY	S.S.
16	CLAMP SET (Complete with fasteners)	2	71-2900 26	S.S.
17	HEX NUT (5/16" - 18)	4	71-2601 26	S.S.
18	CARRIAGE BOLT (5/16" X 1 1/2)	4	71-2509 26	S.S.
19	HEX NUT (1/4" - 20)	24	71-2600 26	S.S.
20	CAP SCREW (1/4" X 1 3/4")	16	71-2500 26	S.S.
21	MANIFOLD, SINGLE PORT (Ports are NPT/BSP compatible)	2	71-0500 40	POLYPRO PVDF
	71-0500 56			
21	MANIFOLD, DUAL PORTS (Ports are NPT/BSP compatible)	2	71-0501 40	POLYPRO PVDF
	71-0501 56			
22	O-RING, MANIFOLD	4	71-1905 11 71-1905 17 71-1905 15 71-1905 13	NITRILE PTFE EPDM VITON
23	SUCTION ELBOW	2	71-0800 40 71-0800 56	POLYPRO PVDF
24	SCREW (#6 X 1/2")	12	71-2510 26	S.S.
25	LOCK WASHER	4	71-2350 26	S.S.
26	VALVE SEAT	4	71-0900 40	POLYPRO PVDF 316 S.S.
			71-0900 56	
			71-0900 26	

ITEM	DESCRIPTION	QTY PER PUMP	PART NO.	MATERIAL
27	BALL	4	71-1000 11	GEOLAST
			71-1000 45	PTFE
			71-1000 23	SANTO
			71-1000 13	VITON
		OPT	71-1000 26	S.S.
28	OUTER CHAMBER	2	71-0700 40 71-0700 56	POLYPRO PVDF
29	OUTER DIAPHRAGM PLATE	2	71-1200 40 71-1200 56	POLYPRO PVDF
30	OVERLAY	2	71-1400 59	PTFE
31	DIAPHRAGM	2	71-0600 19 71-0600 23 71-0600 13	GEOLAST SANTO VITON
32	DISCHARGE ELBOW	2	71-1300 40 71-1300 56	POLYPRO PVDF
33	INNER DIAPHRAGM PLATE	2	71-1100 40 71-1100 56	POLYPRO PVDF
34	INTERMEDIATE	1	71-1516 60 71-1516 43	POLYPRO NYLON
35	CAP SCREW (1/4" X 8")	4	71-2502 26	S.S.
36	MUFFLER PLATE	1	71-3100 60	POLYPRO
37	MUFFLER	1	71-3000 00	
38	O-RING, VALVE SEAT	4	71-1904 11 71-1904 17 71-1904 15 71-1904 13	NITRILE PTFE EPDM VITON
39	GASKET, MUFFLER PLATE	1	71-2105 10	FIBER
40	LIP SEAL, DIAPHRAGM ROD	2	71-2000 11	NITRILE
41	RETAINING PLATE	2	71-2708 40	POLYPRO
42	O-RING, END SPACER	2	71-1923 11	NITRILE
43	LIP SEAL, AIR VALVE	2	71-2003 11	NITRILE
44	O-RING, VALVE PLUG	2	71-1913 11	NITRILE
45	PILOT SLEEVE	1	71-0105 31	ACETAL
46	O-RING, PILOT SLEEVE	4	71-1920 16	URETHANE
47	INNER SPACER, PILOT SLEEVE	3	71-0203 40	POLYPRO

DIAPHRAGM ROD AVAILABLE ONLY AS AN ASSEMBLY

DIAPHRAGM ROD ASSEMBLY (Includes items 13 and 15)	1	73-3000 00	S.S.
--	---	------------	------

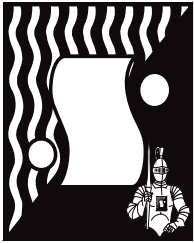
OPTIONAL ASSEMBLIES AVAILABLE

AIR VALVE ASSEMBLY (Includes items 1 thru 7 and 43,44)	1	74-0000 60 74-0000 43	POLYPRO NYLON
---	---	--------------------------	------------------

PILOT SLEEVE ASSEMBLY (Includes items 14, 40, 42, 45-47)	1	74-1000 00	VARIOUS
---	---	------------	---------

NOTES!

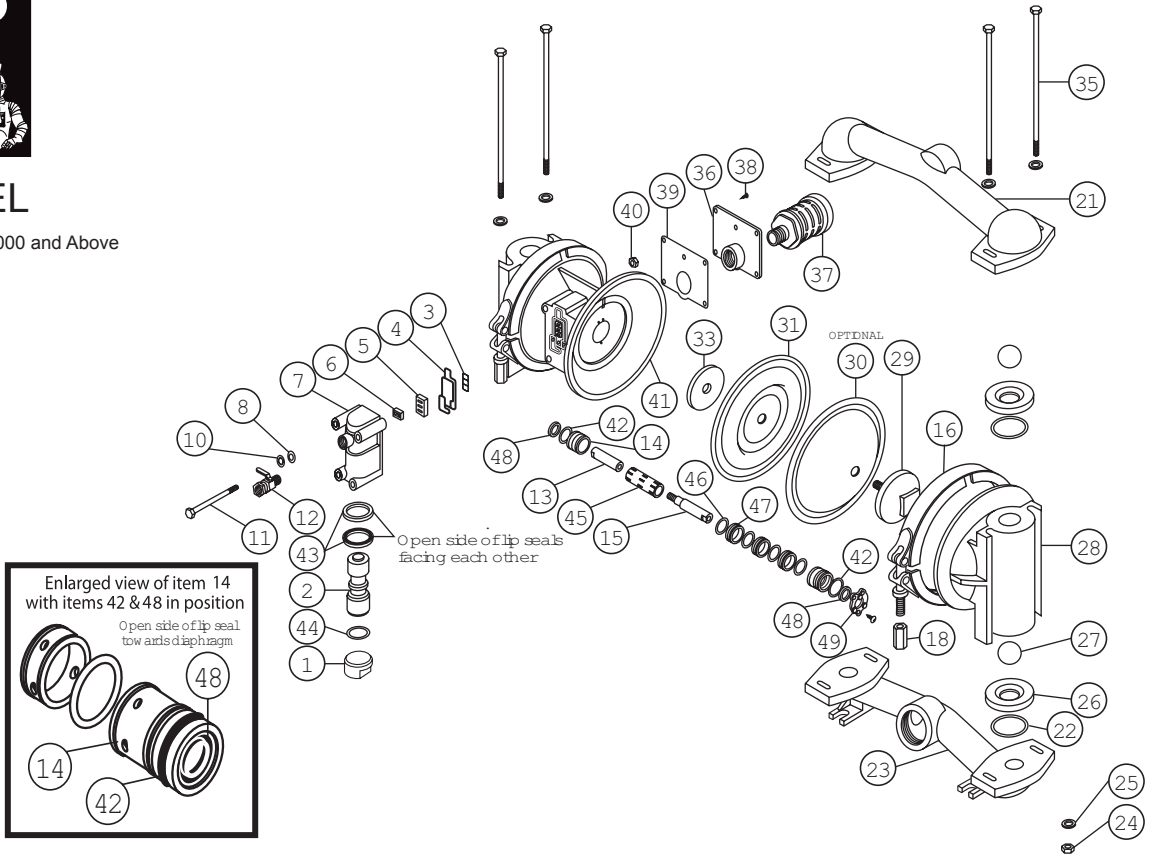
1 P.S. = PLATED STEEL; S.S. = STAINLESS STEEL; AL = ALUMINUM



1" METALLIC

1" MODEL

Metallic
Serial Numbers 62000 and Above



ITEM	DESCRIPTION	QTY PER PUMP	PART NO.	MATERIAL
1	AIR VALVE PLUG	1	71-1703 60	POLYPRO
2	AIR VALVE SPOOL	1	71-0407 31	NYLON
3	GASKET, INNER	1	71-2103 11	ACETAL
4	GASKET, OUTER	1	71-2109 11	GEOLAST
5	VALVE PLATE	1	71-0403 00	S.S.
6	SHUTTLE	1	71-0409 00	SPECIAL
7	AIR VALVE BODY	1	71-1608 60	POLYPRO
8	FLAT WASHER	4	71-1608 43	NYLON
10	LOCK WASHER	4	71-2350 26	S.S.
11	CAP SCREW (1/4" X 5")	4	71-2512 26	S.S.
12	AIR FLOW CONTROL VALVE	1	71-3400 30	BRASS
13	DIAPHRAGM ROD (SHORT)	1	71-3408 51	PVC
14	DIAPHRAGM ROD (LONG)	1	ASSY	S.S.
15	END SPACER, PILOT SLEEVE	2	71-0204 40	POLYPRO
16	DIAPHRAGM ROD (LONG)	1	ASSY	S.S.
17	CLAMP SET (Complete with fasteners)	2	71-2902 26	S.S.
18	HEX NUT (3/8" - 16 X .625")	2	71-2605 26	S.S.
21	DISCHARGE MANIFOLD, NPT	1	71-0529 20	AL
21	DISCHARGE MANIFOLD, BSP	OPT	71-0529 26 71-0530 20 71-0530 26	316 S.S. AL 316 S.S.
22	O-RING, MANIFOLD	4	71-1910 11 71-1910 17 71-1910 15 71-1910 13	NITRILE PTFE EPDM VITON
23	SUCTION MANIFOLD, NPT	1	71-0526 20	AL
23	SUCTION MANIFOLD, BSP	OPT	71-0526 26 71-0527 20 71-0527 26	316 S.S. AL 316 S.S.
24	HEX NUT (3/8" - 16)	4	71-2602 26	S.S.
25	FLAT WASHER	8	71-2303 26	S.S.
26	VALVE SEAT	4	71-0901 57 71-0901 47 71-0901 26	POLYPRO NYLON 316 S.S.
27	BALL	4	71-1002 11 71-1002 45 71-1002 23 71-1002 13	GEOLAST PTFE SANTO VITON
27	HEAVY WEIGHT	OPT	71-1002 22	NITRILE
27		OPT	71-1002 26	S.S.
28	OUTER CHAMBER	2	71-0709 20 71-0709 26	AL 316 S.S.

ITEM	DESCRIPTION	QTY PER PUMP	PART NO.	MATERIAL
29	OUTER DIAPHRAGM PLATE	2	71-1207 20 71-1207 26	AL 316 S.S.
30	OVERLAY	2	71-1406 59	PTFE
31	DIAPHRAGM	2	71-0605 19 71-0605 23 71-0605 13 71-0609 39	GEOLAST SANTO VITON SAN/TEF
31	BONDED ONE PIECE	OPT		
33	INNER DIAPHRAGM PLATE	2	71-1104 25	P.S.
35	CAP SCREW (3/8" X 9 1/2")	4	71-2508 26	S.S.
36	MUFFLER PLATE	1	71-3102 43	POLYPRO NYLON
37	MUFFLER	1	71-3007 00	
38	SCREW (#6 X 1/2")	12	71-2510 26	S.S.
39	GASKET, MUFFLER PLATE	1	71-2102 10	FIBER
40	HEX NUT (1/4" - 200)	4	71-2600 26	S.S.
41	INTERMEDIATE	1	71-1517 60 71-1517 43	POLYPRO NYLON
42	O-RING, END SPACER	2	71-1923 11	NITRILE
43	LIP SEAL, AIR VALVE	2	71-2003 11	NITRILE
44	O-RING, VALVE PLUG	2	71-1913 11	NITRILE
45	PILOT SLEEVE	1	71-0105 31	ACETAL
46	O-RING, PILOT SLEEVE	4	71-1920 16	URETHANE
47	INNER SPACER, PILOT SLEEVE	3	71-0203 40	POLYPRO
48	LIP SEAL, DIAPHRAGM ROD	2	71-2000 11	NITRILE
49	RETAINING PLATE	2	71-2708 40	POLYPRO

DIAPHRAGM ROD AVAILABLE ONLY AS AN ASSEMBLY

DIAPHRAGM ROD ASSEMBLY (Includes items 13 and 15)	1	73-2000 00	S.S.
---	---	------------	------

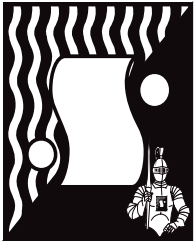
OPTIONAL ASSEMBLIES AVAILABLE

AIR VALVE ASSEMBLY (Includes items 1 thru 7 and 43,44)	1	74-0000 60 74-0000 43	POLYPRO NYLON
--	---	--------------------------	------------------

PILOT SLEEVE ASSEMBLY (Includes items 14, 40, 42, 45-47)	1	74-1000 00	VARIOUS
--	---	------------	---------

NOTES!

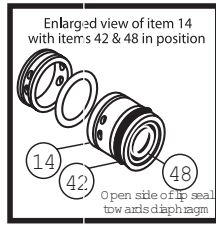
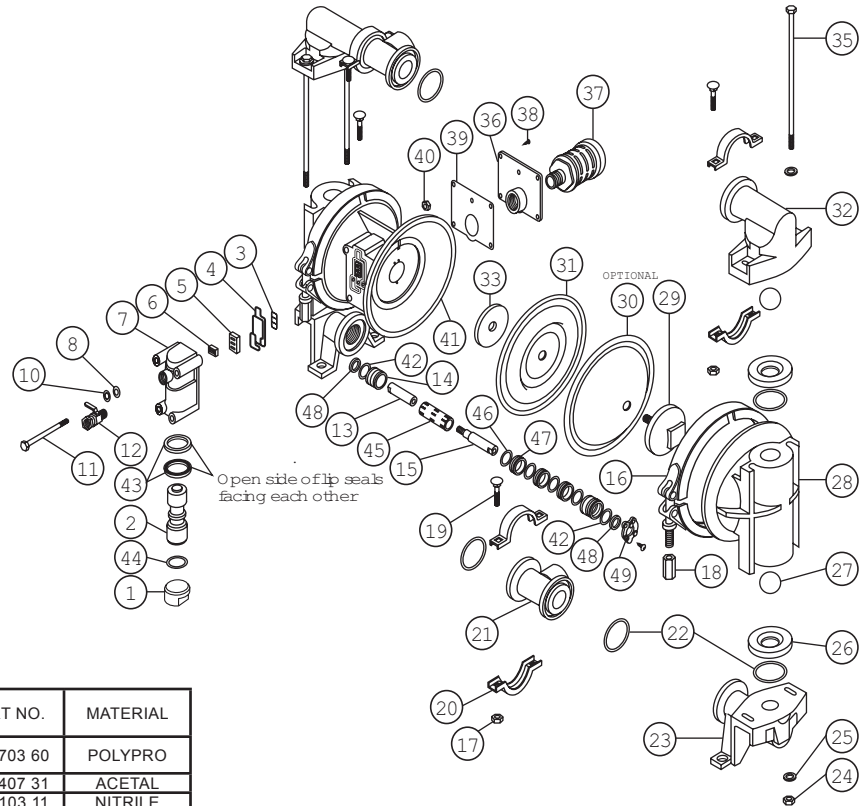
1 AL = ALUMINUM; S.S. = STAINLESS STEEL; P.S. = PLATED STEEL



1" PLASTIC

1" MODEL

Plastic
Serial Numbers 35000 and Above



ITEM	DESCRIPTION	QTY PER PUMP	PART NO.	MATERIAL
1	AIR VALVE PLUG	1	71-1703 60	POLYPRO
2	AIR VALVE SPOOL	1	71-0407 31	ACETAL
3	GASKET, INNER	1	71-2103 11	NITRILE
4	GASKET, OUTER	1	71-2109 11	NITRILE
5	VALVE PLATE	1	71-0403 77	CERAMIC
6	SHUTTLE	1	71-0409 00	SPECIAL
7	AIR VALVE BODY	1	71-1608 60	POLYPRO
8	FLAT WASHER	4	71-2300 26	S.S.
10	LOCK WASHER	4	71-2350 26	S.S.
11	CAP SCREW (1/4" X 5")	4	71-2512 26	S.S.
12	AIR FLOW CONTROL VALVE	1	71-3400 30	BRASS
13	DIAPHRAGM ROD (SHORT)	1	71-3408 51	PVC
14	END SPACER, PILOT SLEEVE	2	71-0204 40	POLYPRO
15	DIAPHRAGM ROD (LONG)	1	ASSY	S.S.
16	CLAMP SET (Complete with fasteners)	2	71-2902 26	S.S.
17	HEX NUT (5/16" - 18)	8	71-2601 26	S.S.
18	HEX NUT (3/8" - 16 X .625")	2	71-2605 26	S.S.
19	CARRIAGE BOLT (5/16" X 1 1/2")	8	71-2509 26	S.S.
20	CLAMP SET, MANIFOLD (Complete with fasteners)	4	71-2903 26	S.S.
21	MANIFOLD, NPT THREADS	1	71-0506 40 71-0506 56	POLYPRO PVDF
	MANIFOLD, BSP THREADS	OPT	71-0509 40 71-0509 47 71-0509 56	POLYPRO NYLON PVDF
22	O-RING, MANIFOLD	8 GFPP (4) PP (seat)	71-1910 11	NITRILE PTFE EPDM VITON
			71-1910 17	
			71-1910 15	
			71-1910 13	
		(4) PP (8) PVDF (manifold)	71-1912 17	PTFE EPDM VITON
			71-1912 15	
			71-1912 13	
23	SUCTION ELBOW	2	71-0801 40 71-0801 56	POLYPRO PVDF
24	HEX NUT (3/8" - 16)	4	71-2602 26	S.S.
25	FLAT WASHER	8	71-2303 26	S.S.
26	VALVE SEAT	4	71-0901 40 71-0901 56	POLYPRO PVDF 316 S.S.
		OPT	71-0901 26	
27	BALL	4	71-1002 11	GEOLAST PTFE SANTO VITON NITRILE S.S.
		71-1002 45		
		71-1002 23		
		71-1002 13		
		71-1002 22		
HEAVY WEIGHT	OPT	71-1002 26		
	OPT			
28	OUTER CHAMBER	2	71-0702 40 71-0702 56	POLYPRO PVDF

ITEM	DESCRIPTION	QTY PER PUMP	PART NO.	MATERIAL
29	OUTER DIAPHRAGM PLATE	2	71-1204 40 71-1204 56	POLYPRO PVDF
30	OVERLAY	2	71-1406 59	PTFE
31	DIAPHRAGM	2	71-0605 19 71-0605 23 71-0605 13 71-0609 36	GEOLAST SANTO VITON SAN/TEF
	BONDED ONE PIECE	OPT		
32	DISCHARGE ELBOW	2	71-1301 40 71-1301 56	POLYPRO PVDF
33	INNER DIAPHRAGM PLATE	2	71-1104 25	P.S.
35	CAP SCREW (3/8" X 9 1/2")	4	71-2508 26	S.S.
36	MUFFLER PLATE	1	71-3102 60	POLYPRO
37	MUFFLER	1	71-3007 00	
38	SCREW (#6 X 1/2")	12	71-2510 26	S.S.
39	GASKET, MUFFLER PLATE	1	71-2102 10	FIBER
40	HEX NUT (1/4" - 20)	4	71-2600 26	S.S.
41	INTERMEDIATE	1	71-1517 60	POLYPRO
42	O-RING, END SPACER	2	71-1923 11	NITRILE
43	LIP SEAL, AIR VALVE	2	71-2003 11	NITRILE
44	O-RING, VALVE PLUG	2	71-1913 11	NITRILE
45	PILOT SLEEVE	1	71-0105 31	ACETAL
46	O-RING, PILOT SLEEVE	4	71-1920 16	URETHANE
47	INNER SPACER, PILOT SLEEVE	3	71-0203 40	POLYPRO
48	LIP SEAL, DIAPHRAGM ROD	2	71-2000 11	NITRILE
49	RETAINING PLATE	2	71-2708 40	POLYPRO

DIAPHRAGM ROD AVAILABLE ONLY AS AN ASSEMBLY

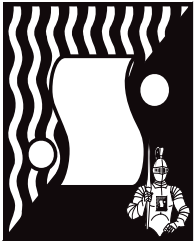
DIAPHRAGM ROD ASSEMBLY (Includes items 13 and 15)	1	73-2000 00	S.S.
--	---	------------	------

OPTIONAL ASSEMBLIES AVAILABLE

AIR VALVE ASSEMBLY (Includes items 1 thru 7 and 43,44)	1	74-0000 60	POLYPRO
PILOT SLEEVE ASSEMBLY (Includes items 14, 40, 42, 45-47)	1	74-1000 00	VARIOUS

NOTES!

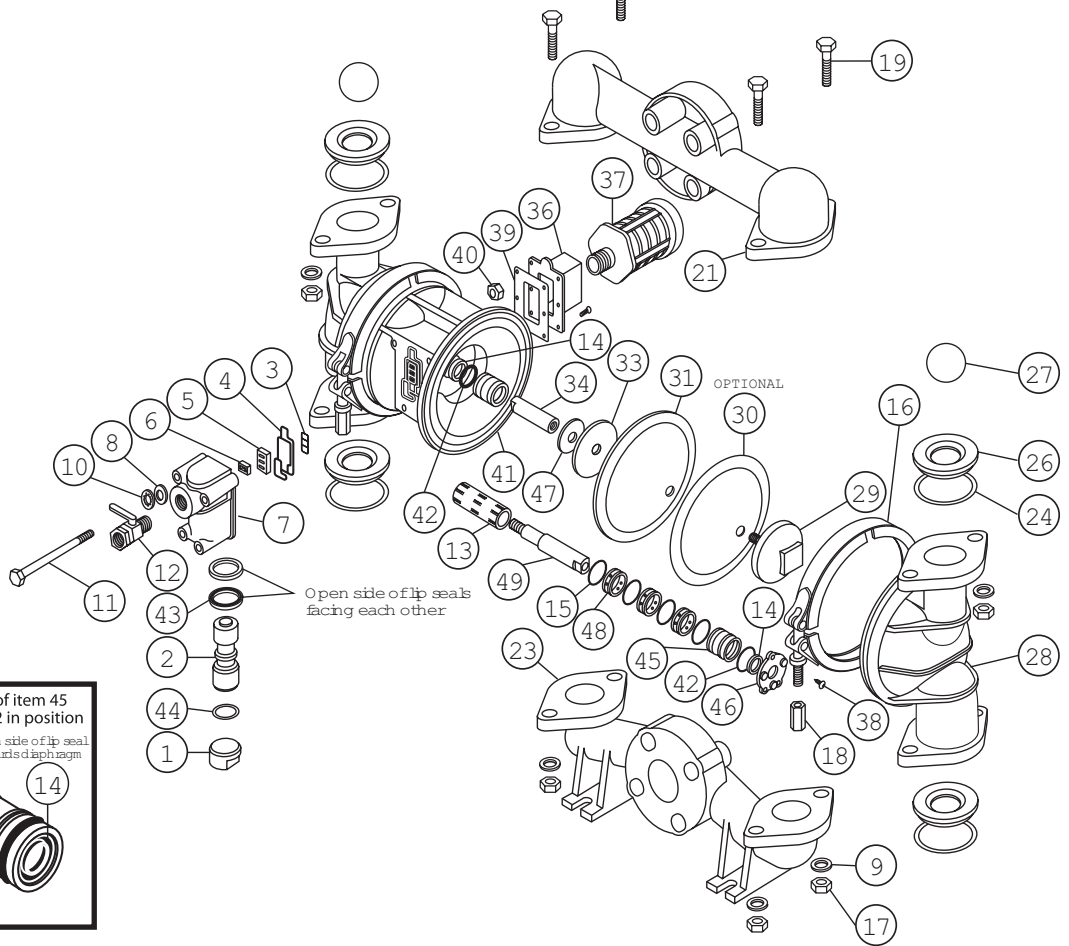
1 P.S. = PLATED STEEL; S.S. = STAINLESS STEEL



1 1/2" METALLIC

1 1/2" MODEL

Metallic
Serial Numbers 62000 and Above



ITEM	DESCRIPTION	QTY PER PUMP	PART NO.	MATERIAL
1	AIR VALVE END PLUG	1	71-1703 60	POLYPRO
2	AIR VALVE SPOOL	1	71-0408 31	ACETAL
3	GASKET, (INNER)	1	71-2106 11	GEOLAST
4	GASKET, (OUTER)	1	71-2110 11	GEOLAST
5	VALVE PLATE	1	71-0410 26	S.S.
6	SHUTTLE VALVE	1	71-0405 00	SPECIAL
7	AIR VALVE BODY	1	71-1610 60	POLYPRO
8	FLAT WASHER	4	71-2300 26	S.S.
9	CARR. BOLT (5/16" X 1.5")	8	71-2509 26	S.S.
10	LOCK WASHER (5/16" X 1.5")	4	71-2350 26	S.S.
11	CAP SCREW (1/4" X 6")	4	71-2515 26	S.S.
12	AIR FLOW CNTRL VALVE	1	71-3401 51	PVC
13	PILOT SLEEVE	1	71-0106 31	ACETAL
14	LIP SEAL (DIAP. ROD)	2	71-2002 76	NITRILE
15	O-RING PILOT SPACER	4	71-1919 16	URETHANE
16	CLAMP SET (Complete with fasteners)	2	71-2904 26	S.S.
17	HEX NUT (1/2" - 13)	8	71-2604 26	S.S.
18	HEX NUT (3/8" - 16 X .625")	2	71-2605 26	S.S.
19	CAP SCRW. (1/2" X 2 1/2")	8	71-2522 26	S.S.
20	CLAMP SET, MANIFOLD (Complete with fasteners)	4	71-2901 26	S.S.
21	DISCHARGE MANIFOLD ST	1	71-0522 20 71-0522 26	AL 316 S.S.
23	SUCTION MANIFOLD	1	71-0516 20 71-0516 26	AL 316 S.S.
24	O-RING, VALVE SEAT	4	71-1926 11 71-1926 17 71-1926 15	NITRILE PTFE EPDM
26	VALVE SEAT	4 OPT OPT	71-0902 40 71-0902 42 71-0902 26 71-0902 15 71-0902 19	POLYPRO NYLON 316 S.S. EPDM NITRILE
27	BALL BALL, HEAVY WEIGHT	4 OPT OPT	71-1002 11 71-1002 45 71-1002 23 71-1002 22 71-1002 26	GEOLAST PTFE SANTO NITRILE S.S.
28	OUTER CHAMBER	2	71-0711 20 71-0711 26	AL 316 S.S.
29	OUTER DIAPHRAGM PLATE	2	71-1211 20 71-1211 26	AL 316 S.S.

ITEM	DESCRIPTION	QTY PER PUMP	PART NO.	MATERIAL
30	OVERLAY	2	71-1403 59	PTFE
31	DIAPHRAGM BONDED ONE PIECE	2 OPT	71-0603 19 71-0603 23 71-0607 36	GEOLAST SANTO SAN/TEF
33	INNER DIAPHRAGM PLATE	2	71-1103 25	P.S.
34	DIAPHRAGM ROD, SHORT	1	ASSY	S.S.
36	MUFFLER PLATE	1	71-3107 60	POLYPRO
37	MUFFLER	1	71-3001 00	
38	SCREW (#6 X 1/2")	12	71-2510 26	S.S.
39	GASKET, MUFFLER PLATE	1	71-2108 10	FIBER
40	HEX NUT (1/4" - 20)	4	71-2600 26	S.S.
41	INTERMEDIATE	1	71-1518 60	POLYPRO
42	O-RING, END SPACER	2	71-1919 11	NITRILE
43	AIR VALVE LIP SEAL	2	71-2003 11	NITRILE
44	O-RING, VALVE PLUG	1	71-1913 11	NITRILE
45	END SPACER, PILOT	2	71-0206 40	POLYPRO
46	RETAINING PLATE	2	71-2709 40	POLYPRO
47	FLAT WASHER	2	71-2302 25	P.S.
48	INNER SPACER, PILOT	3	71-0205 40	POLYPRO
49	DIAPHRAGM ROD, LONG	1	ASSY	S.S.

DIAPHRAGM ROD AVAILABLE ONLY AS AN ASSEMBLY

DIAPHRAGM ROD ASSEMBLY (Includes items 34 and 49)	1	73-5000 00	S.S.
--	---	------------	------

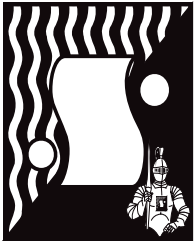
OPTIONAL ASSEMBLIES AVAILABLE

AIR VALVE ASSEMBLY (Includes items 1 thru 7 and 43,44)	1	74-5000 60	VARIOUS
---	---	------------	---------

PILOT SLEEVE ASSEMBLY (Includes items 13, 14, 15, 42, 45, 48)	1	74-6000 00	VARIOUS
--	---	------------	---------

NOTES!

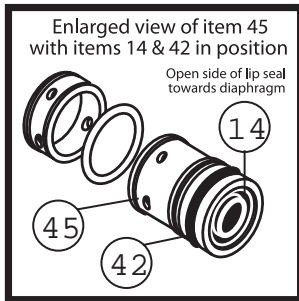
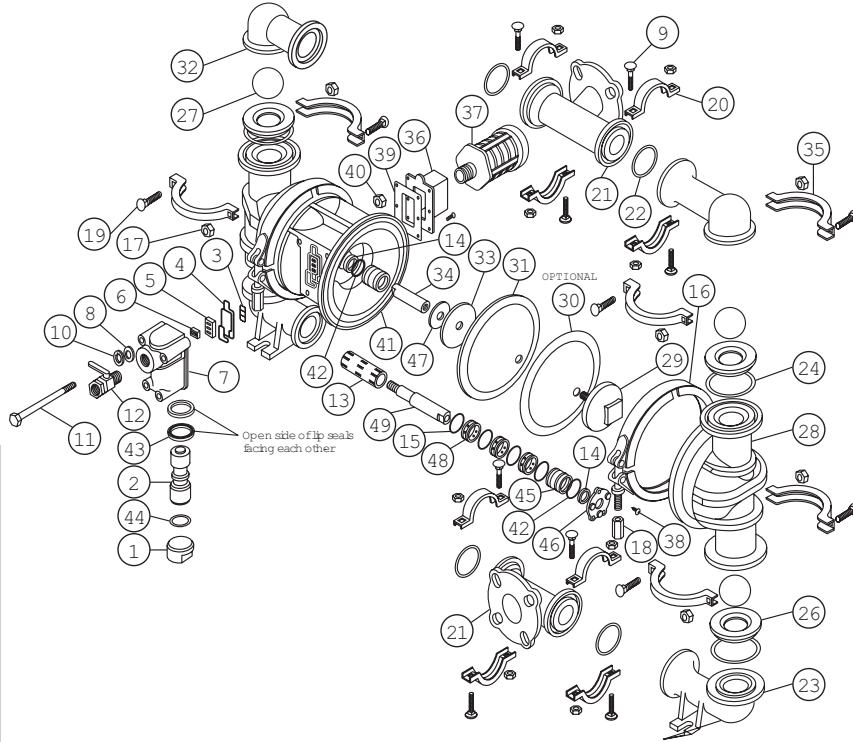
1 P.S. = PLATED STEEL; S.S. = STAINLESS STEEL



1 1/2" PLASTIC

1 1/2" MODEL

Plastic
Serial Numbers 85200 and Above



ITEM	DESCRIPTION	QTY PER PUMP	PART NO.	MATERIAL
1	AIR VALVE END PLUG	1	71-1703 60	POLYPRO
2	AIR VALVE SPOOL	1	71-0408 31	ACETAL
3	GASKET, (INNER)	1	71-2106 11	GEOLAST
4	GASKET, (OUTER)	1	71-2110 11	GEOLAST
5	VALVE PLATE	1	71-0410 26	S.S.
6	SHUTTLE VALVE	1	71-0405 00	SPECIAL
7	AIR VALVE BODY	1	71-1610 60	POLYPRO
8	FLAT WASHER	4	71-2300 26	S.S.
9	CARR. BOLT (5/16 X 1.5")	8	71-2509 26	S.S.
10	LOCK WASHER (1/4")	4	71-2350 26	S.S.
11	CAP SCREW (1/4" X 6")	4	71-2515 26	S.S.
12	AIR FLOW CNTRL VALVE	1	71-3401 51	PVC
13	PILOT SLEEVE	1	71-0106 31	ACETAL
14	LIP SEAL (DIAP. ROD)	2	71-2002 76	NITRILE
15	O-RING PILOT SPACER	4	71-1919 16	URETHANE
16	CLAMP SET (Complete with fasteners)	2	71-2904 26	S.S.
17	HEX NUT (5/16 - 18)	16	71-2601 26	S.S.
18	HEX NUT (3/8" - 16 X .625")	2	71-2605 26	S.S.
19	CARR. BOLT (5/16 X 2")	8	71-2529 26	S.S.
20	CLAMP SET, MANIFOLD (Complete with fasteners)	4	71-2901 26	S.S.
21	MANIFOLD	2	71-0508 57 71-0508 56	POLYPRO PVDF
22	O-RING, MANIFOLD	4	71-1917 11 71-1917 17 71-1922 17 71-1922 15 71-1917 15	NITRILE PTFE PTFE SANTO SANTO
23	SUCTION ELBOW	2	71-0803 57 71-0803 56	POLYPRO PVDF
24	O-RING, VALVE SEAT	4	71-1926 11 71-1926 17 71-1917 17 71-1917 15 71-1926 15	NITRILE PTFE PTFE SANTO SANTO
26	VALVE SEAT	4 OPT OPT OPT	71-0902 40 71-1902 56 71-0902 15 71-0902 19 71-0902 26	POLYPRO PVDF EPDM NITRILE S.S.
27	BALL BALL, HEAVY WEIGHT	4 OPT OPT	71-1004 11 71-1004 45 71-1004 23 71-1004 22 71-1004 26	NITRILE PTFE SANTO NITRILE S.S.
28	OUTER CHAMBER	2	71-0703 57 71-0703 56	POLYPRO PVDF
29	OUTER DIAPHRAGM PLATE	2	71-1203 40 71-1203 56	POLYPRO PVDF

ITEM	DESCRIPTION	QTY PER PUMP	PART NO.	MATERIAL
30	OVERLAY	2	71-1403 59	PTFE
31	DIAPHRAGM BONDED ONE PIECE	2 OPT	71-0603 19 71-0603 23 71-0607 36	GEOLAST SANTO SAN/TEF
32	DISCHARGE ELBOW	2	71-1303 57 71-1303 56	POLYPRO PVDF
33	INNER DIAPHRAGM PLATE	2	71-1103 25	P.S.
34	DIAPHRAGM ROD, SHORT	1	ASSY	S.S.
35	CLAMP SET, ELBOW (complete with fasteners)	4	71-2900 26 71-2905 26	S.S. S.S.
36	MUFFLER PLATE	1	71-3107 60	POLYPRO
37	MUFFLER	1	71-3001 00	
38	SCREW (#6 X 1/2")	12	71-2510 26	S.S.
39	GASKET, MUFFLER PLATE	1	71-2108 10	FIBER
40	HEX NUT (1/4" - 20)	4	71-2600 26	S.S.
41	INTERMEDIATE	1	71-1518 60	POLYPRO
42	O-RING, END SPACER	2	71-1919 11	NITRILE
43	AIR VALVE LIP SEAL	2	71-2003 11	NITRILE
44	O-RING, VALVE PLUG	1	71-1913 11	NITRILE
45	END SPACER, PILOT	2	71-0206 40	POLYPRO
46	RETAINING PLATE	2	71-2709 40	POLYPRO
47	FLAT WASHER	2	71-2302 25	P.S.
48	INNER SPACER, PILOT	3	71-0205 40	POLYPRO
49	DIAPHRAGM ROD, LONG	1	ASSY	S.S.

DIAPHRAGM ROD AVAILABLE ONLY AS AN ASSEMBLY

DIAPHRAGM ROD ASSEMBLY (Includes items 34 and 49)	1	73-5000 00	S.S.
--	---	------------	------

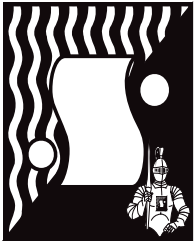
OPTIONAL ASSEMBLIES AVAILABLE

AIR VALVE ASSEMBLY (Includes items 1 thru 7 and 43,44)	1	74-5000 60	VARIOUS
---	---	------------	---------

PILOT SLEEVE ASSEMBLY (Includes items 13, 14, 15, 42, 45, 48)	1	74-6000 00	VARIOUS
--	---	------------	---------

NOTES!

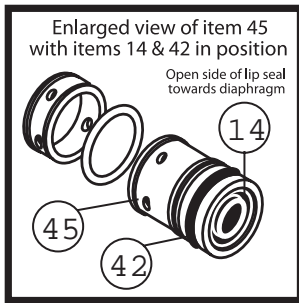
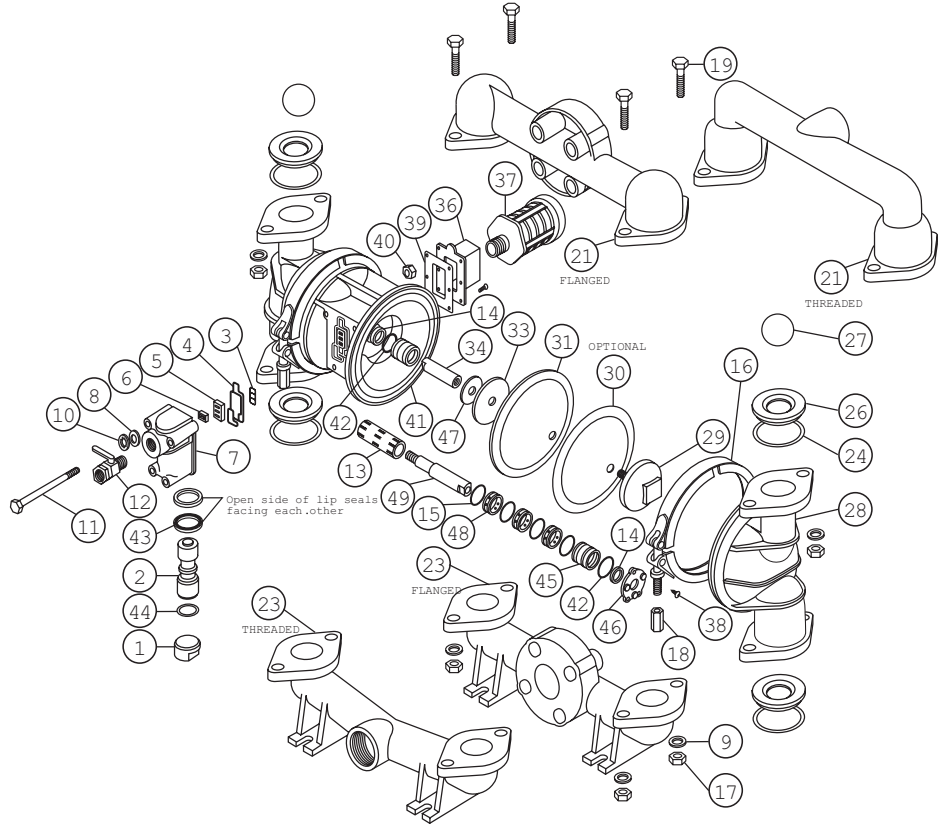
1 P.S. = PLATED STEEL; S.S. = STAINLESS STEEL



2" METAL

2" MODEL

Metal
Serial Numbers 62000 and Above



ITEM	DESCRIPTION	QTY PER PUMP	PART NO.	MATERIAL
1	AIR VALVE END PLUG	1	71-1703 60	POLYPRO
2	AIR VALVE SPOOL	1	71-0408 31	ACETAL
3	GASKET, (INNER)	1	71-2106 11	GEOLAST
4	GASKET, (OUTER)	1	71-2110 11	GEOLAST
5	VALVE PLATE	1	71-0410 26	S.S.
6	SHUTTLE VALVE	1	71-0405 00	SPECIAL
7	AIR VALVE BODY	1	71-1610 60	POLYPRO
8	FLAT WASHER	4	71-2300 26	S.S.
9	CARR. BOLT (5/16 X 1.5")	8	71-2509 26	S.S.
10	LOCK WASHER (1/4")	4	71-2350 26	S.S.
11	CAP SCREW (1/4" X 6")	4	71-2515 26	S.S.
12	AIR FLOW CNTRL VALVE	1	71-3401 51	PVC
13	PILOT SLEEVE	1	71-0106 31	ACETAL
14	LIP SEAL (DIAP. ROD)	2	71-2002 76	NITRILE
15	O-RING PILOT SPACER	4	71-1919 16	URETHANE
16	CLAMP SET, CHAMBER (Complete with fasteners)	2	71-2904 26	S.S.
17	HEX NUT (1/2" - 13)	8	71-2604 26	S.S.
18	HEX NUT (3/8" - 16 X .625")	2	71-2605 26	S.S.
19	CAP SCR. (1/2" X 2 1/2")	8	71-2522 26	S.S.
20	CLAMP SET, MANIFOLD (Complete with fasteners)	4	71-2901 26	S.S.
21	DISC. MANIFOLD FLANGED DISC. MANIFOLD THREADED DISC. MANIFOLD FLANGED	1	71-0524 20 71-0539 20 71-0524 26	AL AL 316 S.S.
23	SUCT. MANIFOLD FLANGED SUCT. MANIFOLD THREADED SUCT. MANIFOLD FLANGED	1	71-0518 20 71-0536 20 71-0518 26	AL AL 316 S.S.
24	O-RING, VALVE SEAT	4	71-1926 11 71-1926 17 71-1926 15	NITRILE PTFE EPDM
26	VALVE SEAT	4 OPT OPT	71-0902 40 71-0902 42 71-0902 26 71-0902 15 71-0902 19	POLYPRO NYLON 316 S.S. EPDM NITRILE
27	BALL BALL, HEAVY WEIGHT	4 OPT OPT	71-1004 11 71-1004 45 71-1004 23 71-1004 22 71-1004 26	NITRILE PTFE SANTO NITRILE S.S.
28	OUTER CHAMBER	2	71-0713 20 71-0713 26	AL 316 S.S.
29	OUTER DIAPHRAGM PLATE	2	71-1211 20 71-1211 26	AL 316 S.S.

ITEM	DESCRIPTION	QTY PER PUMP	PART NO.	MATERIAL
30	OVERLAY	2	71-1403 59	PTFE
31	DIAPHRAGM BONDED ONE PIECE	2 OPT	71-0603 19 71-0603 23 71-0607 36	GEOLAST SANTO SAN/TEF
33	INNER DIAPHRAGM PLATE	2	71-1103 25	P.S.
34	DIAPHRAGM ROD, SHORT	1	ASSY	S.S.
36	MUFFLER PLATE	1	71-3107 60	POLYPRO
37	MUFFLER	1	71-3001 00	
38	SCREW (#6 X 1/2")	12	71-2510 26	S.S.
39	GASKET, MUFFLER PLATE	1	71-2108 10	FIBER
40	HEX NUT (1/4" - 20)	4	71-2600 26	S.S.
41	INTERMEDIATE	1	71-1518 60	POLYPRO
42	O-RING, END SPACER	2	71-1919 11	NITRILE
43	AIR VALVE LIP SEAL	2	71-2003 11	NITRILE
44	O-RING, VALVE PLUG	1	71-1913 11	NITRILE
45	END SPACER, PILOT	2	71-0206 40	POLYPRO
46	RETAINING PLATE	2	71-2709 40	POLYPRO
47	FLAT WASHER	2	71-2302 25	P.S.
48	INNER SPACER, PILOT	3	71-0205 40	POLYPRO
49	DIAPHRAGM ROD, LONG	1	ASSY	S.S.

DIAPHRAGM ROD AVAILABLE ONLY AS AN ASSEMBLY

DIAPHRAGM ROD ASSEMBLY (Includes items 34 and 49)	1	73-5000 00	S.S.
--	---	------------	------

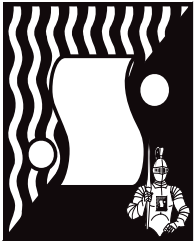
OPTIONAL ASSEMBLIES AVAILABLE

AIR VALVE ASSEMBLY (Includes items 1 thru 7 and 43,44)	1	74-5000 60	VARIOUS
---	---	------------	---------

PILOT SLEEVE ASSEMBLY (Includes items 13, 14, 15, 42, 45, 48)	1	74-6000 00	VARIOUS
--	---	------------	---------

NOTES!

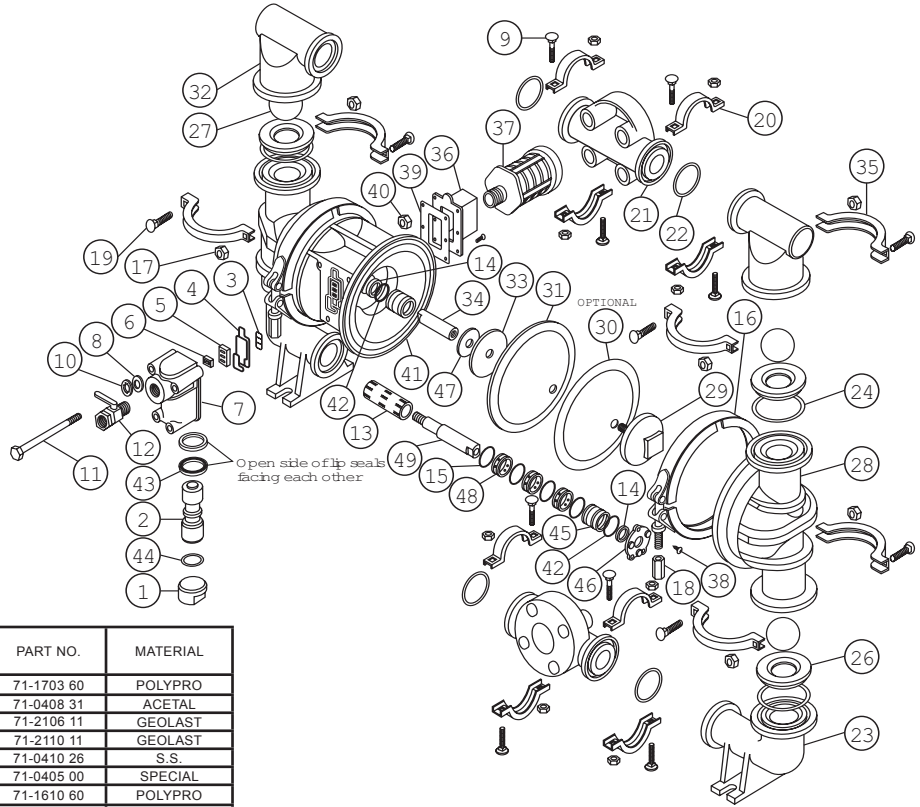
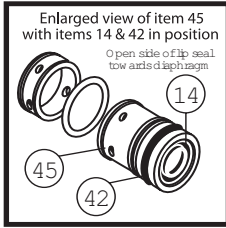
1 P.S. = PLATED STEEL; S.S. = STAINLESS STEEL



2" PLASTIC

2" MODEL

Plastic
Serial Numbers 43000 and Above



ITEM	DESCRIPTION	QTY PER PUMP	PART NO.	MATERIAL
1	AIR VALVE END PLUG	1	71-1703 60	POLYPRO
2	AIR VALVE SPOOL	1	71-0408 31	ACETAL
3	GASKET, (INNER)	1	71-2106 11	GEOLAST
4	GASKET, (OUTER)	1	71-2110 11	GEOLAST
5	VALVE PLATE	1	71-0410 26	S.S.
6	SHUTTLE VALVE	1	71-0405 00	SPECIAL
7	AIR VALVE BODY	1	71-1610 60	POLYPRO
8	FLAT WASHER	4	71-2300 26	S.S.
9	CARR. BOLT (5/16 X 1.5")	8	71-2509 26	S.S.
10	LOCK WASHER (1/4")	4	71-2350 26	S.S.
11	CAP SCREW (1/4" X 6")	4	71-2515 26	S.S.
12	AIR FLOW CNTRL VALVE	1	71-3401 51	PVC
13	PILOT SLEEVE	1	71-0106 31	ACETAL
14	LIP SEAL (DIAP. ROD)	2	71-2002 76	NITRILE
15	O-RING PILOT SPACER	4	71-1919 16	URETHANE
16	CLAMP SET, CHAMBER (Complete with fasteners)	2	71-2904 26	S.S.
17	HEX NUT (5/16" - 18)	16	71-2601 26	S.S.
18	HEX NUT (3/8" - 16 X .625")	2	71-2605 26	S.S.
19	CARR. BOLT (5/16" X 2")	8	71-2529 26	S.S.
20	CLAMP SET, MANIFOLD (Complete with fasteners)	4	71-2901 26	S.S.
21	MANIFOLD	1	71-0507 57 71-0507 47 71-0507 56 71-1917 11	POLYPRO NYLON PVDF NITRILE
22	O-RING, MANIFOLD	4	71-1917 17 71-1922 15 71-1922 15 71-1917 15	PTFE PTFE EPDM EPDM
23	SUCTION ELBOW	2	71-0802 57 71-0802 47 71-0802 56	POLYPRO NYLON PVDF
24	O-RING, VALVE SEAT	4	71-1926 11 71-1926 17 71-1917 17 71-1917 15 71-1926 15	NITRILE PTFE PTFE EPDM EPDM
26	VALVE SEAT	4	71-0902 40 71-1902 42 71-1902 56 71-0902 15 71-0902 19 71-0902 26	POLYPRO NYLON PVDF EPDM NITRILE S.S.
27	BALL	4	71-1004 11 71-1004 45 71-1004 23	NITRILE PTFE SANTO
28	OUTER CHAMBER	2	71-0703 57 71-0703 47 71-0703 56	POLYPRO NYLON PVDF
29	OUTER DIAPHRAGM PLATE	2	71-1203 40 71-1203 42 71-1203 56	POLYPRO NYLON PVDF

ITEM	DESCRIPTION	QTY PER PUMP	PART NO.	MATERIAL
30	OVERLAY	2	71-1403 59	PTFE
31	DIAPHRAGM BONDED ONE PIECE	2 OPT	71-0603 19 71-0603 23 71-0607 36	GEOLAST SANTO SAN/TEF
32	DISCHARGE ELBOW	2	71-1302 57 71-1302 47 71-1302 56	POLYPRO NYLON PVDF
33	INNER DIAPHRAGM PLATE	2	71-1103 25	P.S.
34	DIAPHRAGM ROD, SHORT	1	ASSY	S.S.
35	CLAMP SET, ELBOW (complete with fasteners)	4	71-2900 26 71-2905 26	S.S. S.S.
36	MUFFLER PLATE	1	71-3107 60	POLYPRO
37	MUFFLER	1	71-3001 00	
38	SCREW (#6 X 1/2")	12	71-2510 26	S.S.
39	GASKET, MUFFLER PLATE	1	71-2108 10	FIBER
40	HEX NUT (1/4" - 20)	4	71-2600 26	S.S.
41	INTERMEDIATE	1	71-1518 60	POLYPRO
42	O-RING, END SPACER	2	71-1919 11	NITRILE
43	AIR VALVE LIP SEAL	2	71-2003 11	NITRILE
44	O-RING, VALVE PLUG	1	71-1913 11	NITRILE
45	END SPACER, PILOT	2	71-0206 40	POLYPRO
46	RETAINING PLATE	2	71-2709 40	POLYPRO
47	FLAT WASHER	2	71-2302 25	P.S.
48	INNER SPACER, PILOT	3	71-0205 40	POLYPRO
49	DIAPHRAGM ROD, LONG	1	ASSY	S.S.

DIAPHRAGM ROD AVAILABLE ONLY AS AN ASSEMBLY

DIAPHRAGM ROD ASSEMBLY (Includes items 34 and 49)	1	73-5000 00	S.S.
--	---	------------	------

OPTIONAL ASSEMBLIES AVAILABLE

AIR VALVE ASSEMBLY (Includes items 1 thru 7 and 43, 44)	1	74-5000 60	VARIOUS
--	---	------------	---------

PILOT SLEEVE ASSEMBLY (Includes items 13, 14, 15, 42, 45, 48)	1	74-6000 00	VARIOUS
--	---	------------	---------

NOTES!

1 P.S. = PLATED STEEL; S.S. = STAINLESS STEEL



SERFILCO, LTD.

2900 MacArthur Blvd. 847-509-2900
Northbrook, IL 60062-2005 U.S.A. 800-323-5431
e-mail: sales@serfilco.com FAX: 847-559-1995
www.serfilco.com