

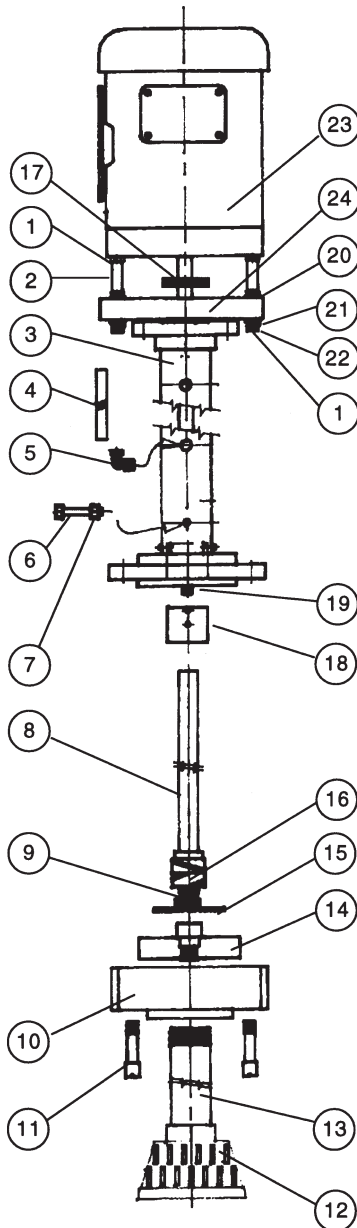


# SERIES 'B' VERTICAL PUMPS

PARTS LIST  
P-3125\_G  
OCTOBER 2012

Refer to Bulletin P-303, Operation and Service Guide O-310.  
Please give serial number and nameplate data when ordering parts.

## SINGLE BEARING PUMPS



Registered trademarks:  
Hastelloy - Haynes, International;  
Viton - DuPont Dow Elastomers;  
Rulon - Dixon

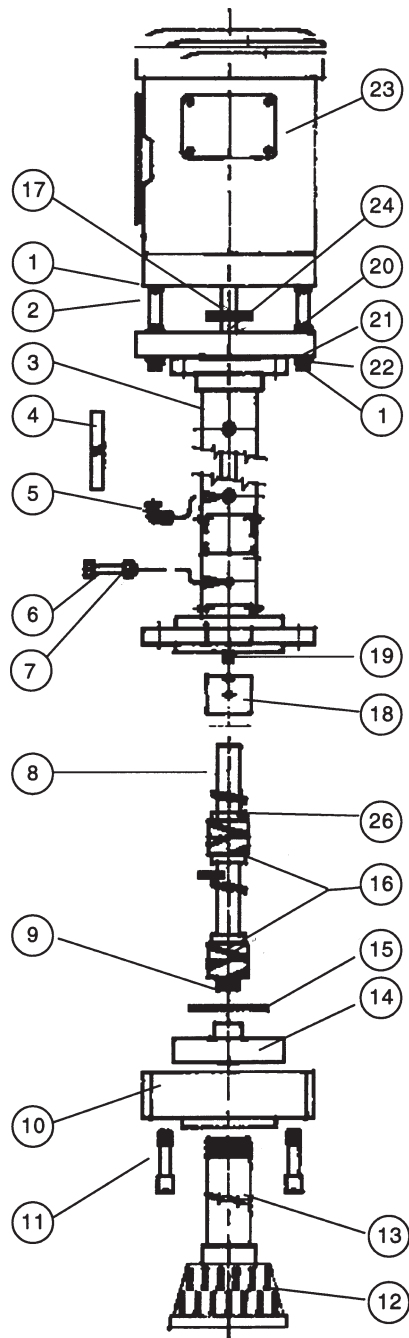
ITEM	DESCRIPTION	MODELS		
		B1½ x 1SCEY	B1½ x 2SCEY	B1½ x 3SCEY
		<b>PART NUMBERS</b>		
1	Hex nut, stn. steel, 3/8"-16 (8 req'd)	11-0105		
2	Stud, stn. steel, 3/8"-16 x 5½" long (4)	11-0160		
3	Column assembly (Standard) (Includes Items 6, 7, 18) 2 foot 3 foot 4 foot	44-2518 44-6531 44-6534	44-2345 44-6532 44-6535	44-6577 44-6533 44-6536
4	Bleed tubing, (per foot)	44-1612		
5	Bleed line elbow, polypropylene	44-1605		
6	Hex bolt, ¼"-20 (2 required) - Titanium ¾" long - Hastelloy®C 1" long	33-0044 11-0459		
7	Locknut, ¼"-20 (2 required) - Titanium - Hastelloy C	11-0334 11-0458		
8 <sup>2</sup>	Drive shaft sleeve - CPVC (Standard) 2 foot 3 foot 4 foot	44-1014 44-2402 44-2320	44-1014-3 44-2402-3 44-2320-3	
9 <sup>1</sup>	"O"-ring - EPDM - Viton (optional)	22-0605 22-0604		
10	Suction casing, CPVC	44-2425	44-2263-1	44-3115
11	Casing bolt, CPVC	44-1616		
12	Suction strainer, polyethylene	99-0745		
13	Extension nipple (optional) for K12 for K24 for K36	33-1444 33-1537 33-1538		
14 <sup>1,3</sup>	Impeller, semi-enclosed - CPVC	44-2210-A	44-1622-A	44-3116-A
15 <sup>1</sup>	"O"-ring - EPDM (Standard) - Viton®	44-1619 22-0443		
16 <sup>1</sup>	Ring, helix groove LH (2 req'd.) - Carbon graphite - Rulon® (Glass filled TFE)	44-1973 44-1975		
16A <sup>1</sup>	Bearing spacer - CPVC (1 req'd)	44-1977		
17 <sup>1</sup>	Slinger washer - EPDM	55-0140		
18 <sup>1</sup>	Casing liner - ceramic	44-1979		
19	Drive shaft - stainless steel 2 foot 3 foot 4 foot	44-0818 44-6528 44-2319		
20	Locknut, stainless steel, 3/8"-16 (4)	11-0519		
21	Flat washer, stainless steel, 3/8" size	11-0447		
22	Lockwasher, stainless steel, 3/8" size (4)	11-0140		
23	Motor, TEFC, 230/460/3/50-60, 1725 RPM  <i>SELECT MOTOR AS NEEDED</i>	1½ HP - 66-1032 2 HP - 66-0924-A 3 HP - 66-0486-A 5 HP - 66-1195-A		
24	Vapor seal - TFE	22-0848		
25	Discharge elbow assembly - CPVC (Not shown)	44-7382	44-7383	
26	Mounting plate, 24" square - PVC (Not Shown) 24" round	43-0927 43-0928		

<sup>1</sup> Recommended spare parts.

<sup>2</sup> Pumps manufactured after September, 1990 have left hand threads on adapter. Please consult Application Engineering Department if right-hand thread adapter is required.

<sup>3</sup> Impellers with right-hand thread shaft-sleeve couplings (for pumps manufactured before October, 1990) are no longer available. Therefore, a new corresponding shaft-sleeve (left-hand thread) is also required.

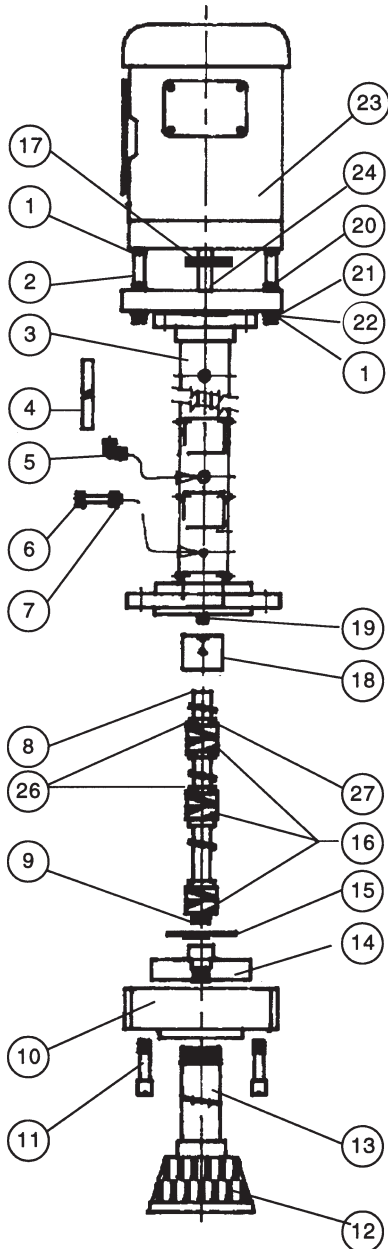
## DOUBLE BEARING PUMPS



ITEM	DESCRIPTION	MODELS		
		B1½ x 1SCEY	B1½ x 2SCEY	B1½ x 3SCEY
		PART NUMBERS		
1	Hex nuts, 3/8"-16 - stn. steel, (8 req'd)	11-0105		
2	Stud, 3/8"-16 x 5½" long - stn. steel	11-0160		
3	Column assembly (Standard) Includes Items 6,7, & 18 5 foot 6 foot 7 foot 8 foot	44-6537 44-6540 44-6543 44-6546	44-6538 44-6541 44-6544 44-6547	44-6539 44-6542 44-6545 44-6548
4	Bleed tubing, (per foot)	44-1612		
5	Bleed line elbow - polypropylene	44-1605		
6	Hex bolt, ¼"-20-Titanium 1" long (1 req'd) - Titanium ¾" long (4 req'd) - Hastelloy C 1" long (5 req'd)	11-0335 33-0044 11-0459		
7	Locknut, ¼"-20 (5 required) - Titanium - Hastelloy C	11-0334 11-0458		
8²	Drive shaft sleeve - CPVC (Standard) Includes Item 26 5 foot 6 foot 7 foot 8 foot	44-2420 44-2436 44-2289 44-2417	44-2420-3 44-2436-3 44-2289-3 44-2417-3	
9¹	'O'-ring -EPDM - Viton (optional)	22-0605 22-0604		
10	Suction casing - CPVC	44-2425	44-2263-1	44-3115
11	Casing bolt - CPVC	44-1616		44-3118
12	Suction strainer - polyethylene	99-0745		
13	Extension nipple (optional) for K12 for K24 for K36	33-1444 33-1537 33-1538		
14¹, ³	Impeller, semi-enclosed - CPVC	44-2210-A	44-1622-A	44-3116-A
15¹	"O"-ring - EPDM (Standard) - Viton	44-1619 22-0443		
16¹	Ring, helix groove LH (4 req'd.) - Carbon graphite - Rulon (Glass filled TFE)	44-1973 44-1975		
16A¹	Bearing spacer - CPVC (2 req'd)	44-1977		
17¹	Slinger washer - EPDM	55-0140		
18¹	Casing liner - ceramic	44-1979		
19	Drive shaft - stainless steel 5 foot 6 foot 7 foot 8 foot	44-2421 44-2435 44-2288 44-1692		
20	Locknut, 3/8"-16 - stainless steel	11-0519		
21	Flat washer, 3/8" size - stn. steel	11-0447		
22	Lockwasher, 3/8" size - stn. steel	11-0140		
23	Motor, TEFC, 230/460/3/50-60, 1725 RPM  <i>SELECT MOTOR AS NEEDED</i>	1½ HP - 66-1032 2 HP - 66-0924-A 3 HP - 66-0486-A 5 HP - 66-1195-A		
24	Vapor seal - TFE	22-0848		
25	Discharge elbow assembly - CPVC (Not shown)	44-7382	44-7383	
26	Set collar - CPVC Set screw ¼"-20 x ¼" long (4 req'd) - Titanium (standard) - Hastelloy C	44-1621 11-0476 11-0681		
27	Mounting plate, 24" square - PVC (Not Shown) 24" round	43-0927 43-0928		

1 Recommended spare parts.  
2 Pumps manufactured after September, 1990 have left hand threads on adaptor. Please consult Application Engineering Department if right-hand thread adapter is required.  
3 Impellers with right-hand thread shaft-sleeve couplings (for pumps manufactured before October, 1990) are no longer available. Therefore a new corresponding shaft-sleeve (left-hand thread) is also required.

# TRIPLE BEARING PUMPS



- 1 Recommended spare parts.
- 2 Pumps manufactured after September 1990 have left hand threads on adaptor. Please consult Application Engineering Department if right-hand thread adaptor is required.
- 3 Impellers with right-hand thread shaft-sleeve couplings (for pumps manufactured before October 1990) are no longer available. Therefore a new corresponding shaft-sleeve (left-hand thread) is also required.

ITEM	DESCRIPTION	MODELS		
		B1½ x 1SCEY	B1½ x 2SCEY	B1½ x 3SCEY
PART NUMBERS				
1	Hex nut, stn. steel, 3/8"-16 (8 req'd)	11-0105		
2	Stud, stn. steel, 3/8"-16 x 5½" long	11-0160		
3	Column assembly (Standard) Includes Items 6, 7 and 18			
	9 foot	44-6549	44-6550	44-6551
	10 foot	44-6552	44-6553	44-6554
	11 foot	44-6555	44-6556	44-6557
	12 foot	44-6558	44-6559	44-6560
4	Bleed tubing, (per foot)	44-1612		
5	Bleed line elbow, polypropylene	44-1605		
6	Hex bolt, ¼"-20-Titanium 1" long (2 req'd) - Titanium ¾" long (6 req'd) - Hastelloy C 1" long (8 req'd)	11-0335 33-0044 11-0459		
7	Locknut, ¼"-20 (8 required) - Titanium - Hastelloy C	11-0334 11-0458		
8 <sup>2</sup>	Drive shaft sleeve, CPVC (Standard) Includes: 26 & 27			
	9 foot	44-2354	44-2354-3	
	10 foot	44-2583	44-2583-3	
	11 foot	44-6530	44-6530-3	
	12 foot	44-2262	44-2262-3	
9 <sup>1</sup>	'O'-ring - EPDM - Viton (optional)	22-0605 22-0604		
10	Suction casing - CPVC	44-2425	44-2263-1	44-3115
11	Casing bolt - CPVC	44-1616		
12	Suction strainer - polyethylene	99-0745		
13	Extension nipple (opt.)	for K12 33-1444 for K24 33-1537 for K36 33-1538		
14 <sup>1, 3</sup>	Impeller, semi-enclosed - CPVC	44-2210-A	44-1622-A	44-3116-A
15 <sup>1</sup>	"O"-ring - EPDM (Standard) - Viton	44-1619 22-0443		
16 <sup>1</sup>	Ring, helix groove LH (6 req'd.) - Carbon graphite - Rulon (Glass filled TFE)	44-1973 44-1975		
16A <sup>1</sup>	Bearing spacer -CPVC (3 req'd)	44-1977		
17 <sup>1</sup>	Slinger washer - EPDM	55-0140		
18 <sup>1</sup>	Casing liner - ceramic	44-1979		
19	Drive shaft - stainless steel			
	9 foot	44-2353		
	10 foot	44-2581		
	11 foot	44-6529		
	12 foot	44-2261		
20	Locknut - stainless steel, 3/8"-16	11-0519		
21	Flat washer - stainless stl., 3/8" size	11-0447		
22	Lockwasher - stainless stl., 3/8" size	11-0140		
23	Motor, TEFC, 230/460/3/50-60, 1725 RPM	1½ HP - 66-1032 2 HP - 66-0924-A 3 HP - 66-0486-A 5 HP - 66-1195-A		
<b>SELECT MOTOR AS NEEDED</b>				
24	Vapor seal - TFE	22-0848		
25	Discharge elbow assembly - CPVC (not shown)	44-7382	44-7383	
26	Set collar - CPVC ( 2 req'd) Set screw ¼"-20 x ¼" long (8 req'd) - Titanium (standard) - Hastelloy C	44-1621 11-0476 11-0681		
27	Bushing - CPVC Set screw, ¼"-20 x ¼" long (4 req'd) - Titanium (standard) - Hastelloy C	44-1013 B 11-0476 11-0681		
28	Mounting plate, 24" square - PVC (Not Shown) 24" round	43-0927 43-0928		



**SERFILCO®**

2900 MacArthur Blvd. 847-509-2900  
Northbrook, IL 60062-2005 U.S.A. 800-323-5431  
e-mail: sales@serfilco.com FAX: 847-559-1995  
www.serfilco.com