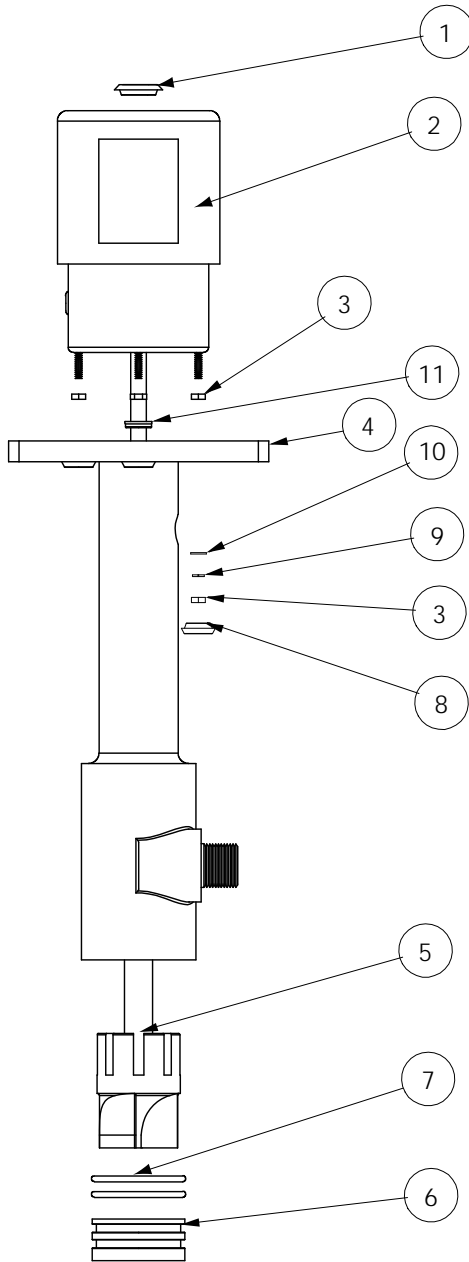




# SERIES 'E' VERTICAL PUMPS

MODELS	PRICE CODE NOS.	
	PUMP & MOTOR	PUMP ONLY
E $\frac{3}{4}$ SCL C1/8	45-0027-1	45-0793
E $\frac{3}{4}$ SKV C1/8	45-0028-1A	45-0794
E $\frac{3}{4}$ SPPL C1/8	45-0030	45-0795



ITEM	DESCRIPTION	E3/4
		PART NUMBER
1	Cap, polyethylene	33-1660
2	Motor and shaft assembly 1/8 HP, 115-230V/1/50-60	44-0715H
3	Hex nut 8-32 - stainless steel, (8 required)	11-0137
4	Column and suction casing - CPVC - PVDF - Polypropylene w/ hole for DPA or CPS units - CPVC - PP	44-6125 44-6125A 44-3244 44-6125-2 44-3244-3
5	Impeller - CPVC - PVDF - Polypropylene	44-6124-1 44-6124-1A 44-3240-1
6	Suction casing cover - CPVC - PVDF - Polypropylene	44-6121 44-6121A 44-3245
7	"O"-ring (2 required) - Ethylene propylene - Viton®	22-0747 22-0748
8	Cap - black polyethylene (4 required)	33-1688
9	Lockwasher - stainless steel (4 required)	11-0278
10	Flat washer - stainless steel (4 required)	11-0279
11	Vapor seal	55-0593

**The following items are not shown**

12	Discharge pipe assembly	
	Elbow 90° thread 1" - CPVC - PVDF - Polypropylene	33-0994 33-0994-K 33-0994-PP
	Reducing bushing, 1" x $\frac{3}{4}$ " - CPVC - PVDF - Polypropylene	33-0184 33-0184-K 33-0184-PP
	Nipple NPT x 12" - CPVC - PVDF - Polypropylene	33-1051 33-1051-K 33-1051-PP
	Suction strainer - polyethylene 1" NPT	33-6058

Bulletin	P-300
Operation and Service Guide	O-0925

