

# VPH Series

High Purity Virgin Polypropylene Housings



- 100% Virgin Polypropylene housing provides economical alternative for high purity applications
- Rugged design provides long, trouble-free service
- Ultra-smooth, corrosion resistant surface ideal for sensitive fluids
- Low cost alternative to stainless steel housings
- Available in Double Open-End (DOE) and 222 cartridge configurations
- Holds 10 or 20 inch cartridge lengths
- Meets FDA requirements for potable water and food and beverage applications.
- Optional mounting bracket available for easy installation

## Applications

Water	Chemicals
Food & Beverage	Electronics
DI Water	Inks / Paints / Coatings
Coolants	Pulp & Paper

## Specifications & Operating Parameters

### Maximum Operating Pressure

125 psig (20.7 bar) @ 125°F (93°C)

### Connections

Inlet /Outlet:  
Standard – 3/4" FNPT

### Materials of Construction

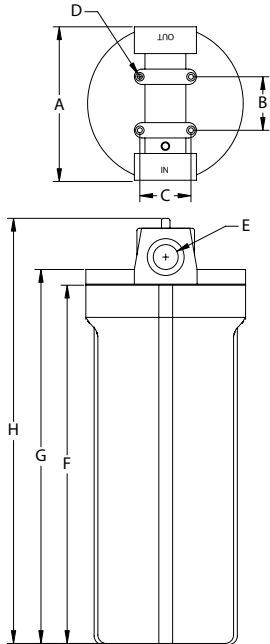
Head / Sump: 100% Virgin Polypropylene

### Gaskets

Standard Viton  
Optional EPR

## Dimensions

MODEL	A	B	C	D	E	F
VPH-10-DOE	4.72" (12.0 cm)	1.57" (4.0 cm)	1.18" (3.0 cm)	0.16" (.40 cm)	11.8" (30.0 cm)	10.5" (26.7 cm)
VPH-12-222	5.35" (13.6 cm)	2.22" (5.6 cm)	2.28" (5.8 cm)	0.23" (0.58 cm)	14.0" (35.6 cm)	12.0" (30.5 cm)
VPH-20-DOE	5.35" (13.6 cm)	2.22" (5.6 cm)	2.28" (5.8 cm)	0.23" (0.58 cm)	22.8" (57.9 cm)	20.47" (52.0 cm)
VPH-20-222	5.35" (13.6 cm)	2.22" (5.6 cm)	2.28" (5.8 cm)	0.23" (0.58 cm)	22.8" (57.9 cm)	20.47" (52.0 cm)



## Models

MODEL	DESCRIPTION - CARTRIDGE LENGTH & CONNECTOR / O-RING	OPTIONAL BRACKET KIT
VPH-10-DOE	9 7/8" Double Open End Cartridge / Viton O-ring	BK1
VPH-12-222	10" with 222 Single Open End Cartridge / Viton O-ring	BK2
VPH-20-DOE	20" Double Open End Cartridge / Viton O-ring	BK2
VPH-20-222	20" with 222 Single Open End / Flat Cartridge / Viton O-ring	BK2

## Filter Housings

Shelco manufactures a full line of filter housings. From our rugged single cartridge housings to our heavy duty multi-cartridge housings and bag filter housings, Shelco is the perfect choice for your filtration solutions.