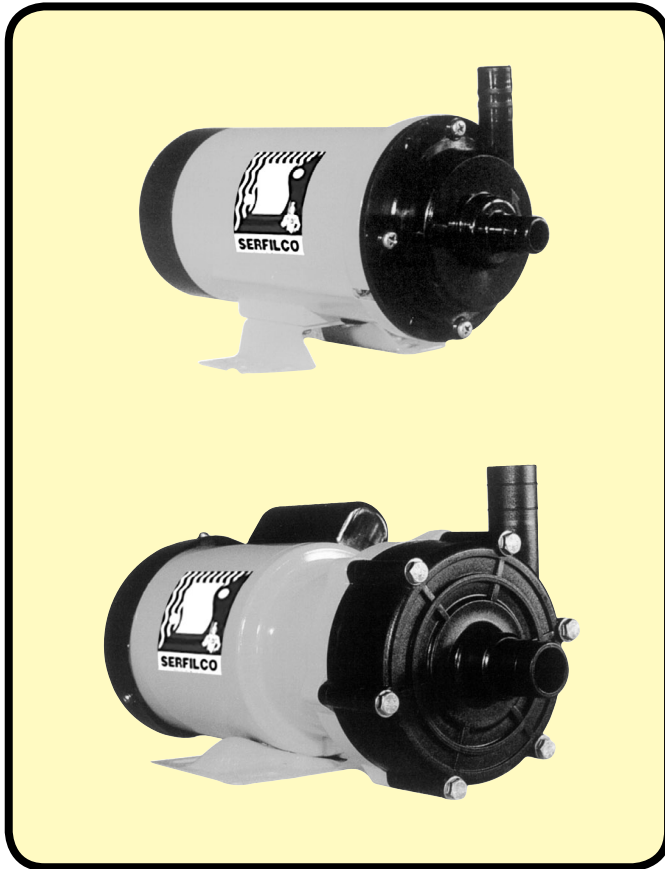




## SERIES 'X' | MAGNETIC PUMPS

**NON-METALLIC AND SEAL-LESS PROVIDING TOTAL VAPOR AND SOLUTION CONTAINMENT FOR:**



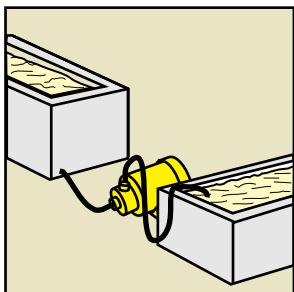
**ACID / AQUEOUS / CAUSTIC  
CHEMICAL / PLATING  
PHOTOGRAPHIC**

- **Flows from 1 to 25 U.S. GPM @ 60 Hz**  
(3 - 78 LPM @ 50 Hz)
- **Non-metallic solution contact**  
Polypropylene or ETFE with Viton®  
(See a chemical resistance chart)
- **NPT or hose barb connections**
- **Strong magnets will handle liquids to 1.3 specific gravity**
- **Continuous duty design.**
- **Compact, quiet and efficient**
- **UL approved, CEC conforming**
- **Motors are available**  
115V/1/60 Hz or 230V/1/50-60 Hz

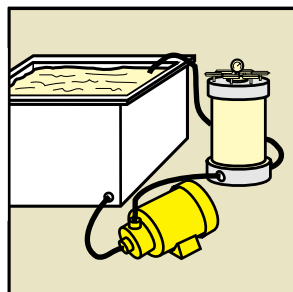
**SERIES 'X' Magnetic Coupled Pumps** are the latest in magnetic coupled pump technology. Tested and proven design features provide a pump that is seal-less and leakproof. Available materials of construction and flow capacities from 1 to 25 U.S. GPM make these pumps an excellent choice for a wide variety of applications from water at ambient temperatures to harsh chemicals at elevated temperatures.

Standard 'X' models have strong magnets and powerful, highly efficient continuous duty motors which allow them to operate non-overloading and provide continuous flow with liquids up to 1.3 specific gravity. Compact and quiet Series 'X' pumps are designed to provide years of trouble-free operation.

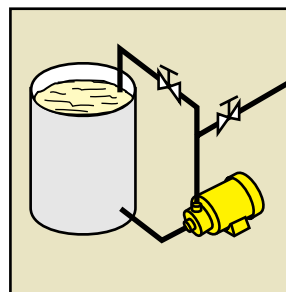
The following information covers standard Series 'X' models. For other models and magnetic coupled pumps to 250 GPM, consult our Sales Dept.



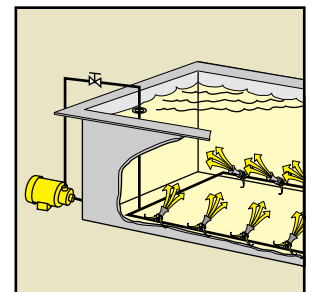
WASTE TREATMENT



FILTER SYSTEM



MIXING and TRANSFER  
PUMPING

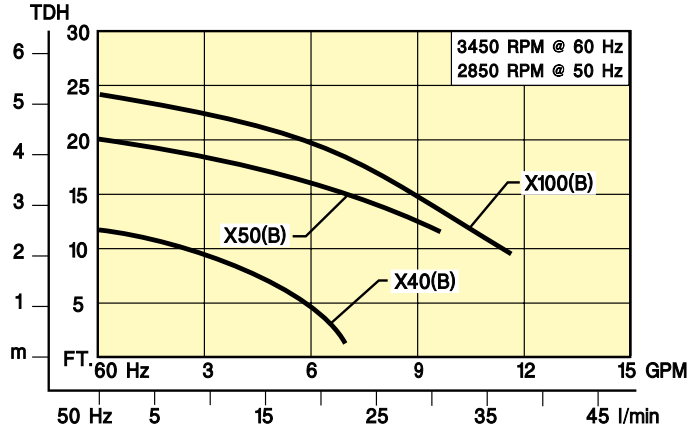


EDUCTOR AGITATION  
and MIXING

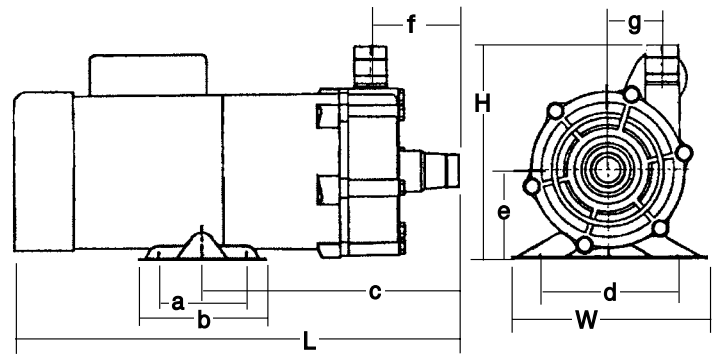
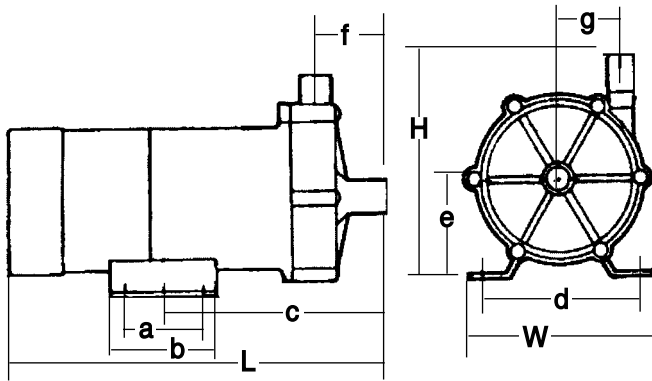
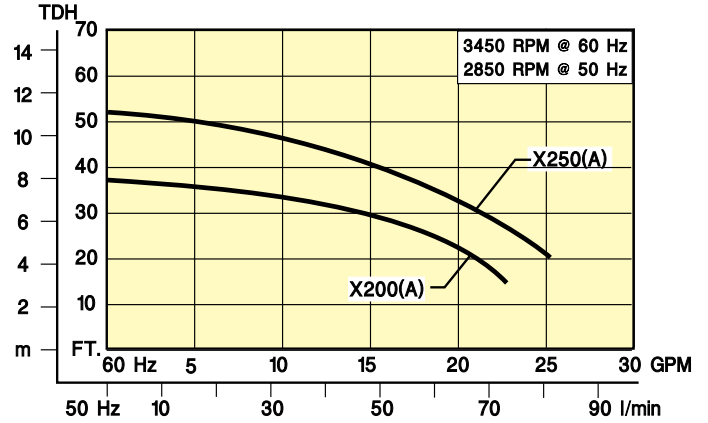


**SERIES 'X' Performance and Dimensions**

**Models X40, X50 & X100**



**Models X200 & X250**



**Models X40, X50 & X100**

**Models X200 & X250**

MODEL	DIMENSIONS (Inches)									
	W	H	L	a	b	c	d	e	f	g
X40	3.73	4.53	8.08	1.19	1.97	5.18	2.68	2.17	1.30	1.12
X50	4.72	5.12	9.12	1.58	2.52	6.65	3.94	2.36	1.89	1.22
X100	4.36	5.12	10.31	1.58	2.52	6.65	3.94	2.36	1.89	1.22
X200	6.14	6.50	13.97	2.76	3.94	8.07	4.33	2.59	2.75	1.72
X250	6.14	6.50	14.30	2.76	3.94	8.07	4.33	2.59	2.75	1.72



Select flow curve providing desired performance. Select materials of construction and connections required. Use Price Code Number to order.

### POLYPROPYLENE / VITON w/HOSE CONNECTIONS

FLOW CURVE	MAX. FLOW GPM	MAX. TDH Ft.	HP	CONNS. In.	S. G. *	MODEL NUMBER	PRICE CODE NO.
X40 (B)	7.3	11.6	1/40	5/8	1.3	X40PV 5/8H CRYR B C.02	81-4114-2D
X50 (B)	10	20	1/15	3/4	1.3	X50PV 3/4H CRYR B C.06	81-5134-2E
X100 (B)	12	24	1/10	3/4	1.3	X100PV 3/4H CRYR B C.1	81-6134-2F
X200 (A)	24	36	1/5	1	1.1	X200PV 1H CR A C.2	81-7156-1G
X250 (A)	29	50	1/3	1	1.1	X250PV 1H CR A C.3	81-8156-1H

### POLYPROPYLENE / VITON w/MNPT CONNECTIONS

X40 (B)	7.3	11.6	1/40	3/4	1.3	X40PV 3/4T CRYR B C.02	81-4144-2D
X50 (B)	10	20	1/15	3/4	1.3	X50PV 3/4T CRYR B C.06	81-5144-2E
X100 (B)	12	24	1/10	3/4	1.3	X100PV 3/4T CRYR B C.1	81-6144-2F
X200 (A)	24	36	1/5	1	1.1	X200PV 1T CR A C.2	81-7166-1G
X250 (A)	29	50	1/3	1	1.1	X250PV 1T CR A C.3	81-8166-1H

### ETFE / VITON w/HOSE CONNECTIONS

X40 (B)	7.3	11.6	1/40	5/8	1.3	X40EV 5/8H CETR B C.02	81-4315-2D
X50 (B)	10	20	1/15	3/4	1.3	X50EV 3/4H CETR B C.06	81-5335-2E
X100 (B)	12	24	1/10	3/4	1.3	X100EV 3/4H CETR B C.1	81-6335-2F

### ETFE / VITON w/MNPT CONNS.

X40 (B)	7.3	11.6	1/40	3/4	1.3	X40EV 3/4T CETR B C.02	81-4345-2D
X50 (B)	10	20	1/15	3/4	1.3	X50EV 3/4T CETR B C.06	81-5345-2E
X100 (B)	12	24	1/10	3/4	1.3	X100EV 3/4T CETR B C.1	81-6345-2F
X200 (A)	24	36	1/5	1	1.1	X200EV 1T CR A C.2	81-7366-1G
X250 (A)	29	50	1/3	1	1.1	X250EV 1T CR A C.3	81-8366-1H

\* Consult Sales Dept. for operation with solutions having higher specific gravity.

### OPTIONAL

DESCRIPTION	ADD TO MODEL NO.	ADD TO PRICE CODE NO.
OPTIONAL Motor - 230V / 1Ø / 50-60	-50	-5
EPDM elastomers	Change V to L	-L

### MODEL KEY

Series	Materials	Connections	Friction Surfaces	Spindle	R. Thrust	F. Thrust	Bearing	Mouth Ring	Impeller			Motor	HP																		
									A	B	C																				
X40	PV PP / Viton EV ETFE / Viton	5/8H = 5/8" hose barb	CRYR CETR CR	Ceramic	Ryton®	Rulon	Ceramic	—	A	to 1.1 S.G.	C.02	1/40																			
X50		3/4H = 3/4" hose barb											Ceramic	ETFE	Rulon	Ceramic	—	B	to 1.3 S.G.	C.06	1/15										
X100		3/4T = 3/4" MNPT																				Ceramic	Ceramic	Rulon	Rulon	C	to 1.5 S.G.	C.1	1/10		
X200		1H = 1" hose barb																												C.2	1/5
X250		1T = 1" MNPT																													

### GENERAL PRODUCT NOTES:

- Caution: Consult chemical resistance guide to assure material / solution compatibility.
- Do not use with liquids having ferrous (magnetic) metal particles.
- Standard 115V/1Ø/60 Hz motors include 6 ft. cord with molded 60 Hz plug.
- PV** and **EV** models are glass reinforced.



# PERFECT PUMPS FOR CHEMICALS

**Proudly Made in the USA, SERFILCO Offers the Widest Range of Chemical Pumps Anywhere.**

## 'EH' Vertical Pump

- Can Run Dry
- Extended Column to 10'
- Flows to 185 gpm, 145 ft. TDH



## 'HE' Horizontal Pump

- Single or Double Mech. Seal
- Variety of Material Types
- Flows to 175 gpm, 140 ft. TDH



## 'ME' Magnetic Coupled Pump

- Seal-less Magnetic Coupled
- Polypropylene or PVDF
- Flows to 95 gpm, 54 ft. TDH



## 'EF' Vertical Pump

- Can Run Dry
- Suction Extension to 3'
- Flows to 400 gpm, 170 ft. TDH



## 'HF' Horizontal Pump

- Single or Double Mech. Seal
- Variety of Material Types
- Flows to 400 gpm, 160 ft. TDH



## 'FE' Magnetic Coupled Pump

- Seal-less Magnetic Coupled
- Polypropylene or PVDF
- Flows to 130 gpm, 97 ft. TDH



## 'EHM' Vertical Pump

- Can Run Dry
- Suction Extension to 3'
- Flows to 650 gpm, 115 ft. TDH



## 'HA' Horizontal Pump

- Single or Double Mech. Seal
- Machined from Solid CPVC
- Flows to 1200 gpm, 115 ft. TDH



## 'FES' Magnetic Coupled Pump

- Seal-less Magnetic Coupled
- Polypropylene or PVDF
- Flows to 250 gpm, 175 ft. TDH

